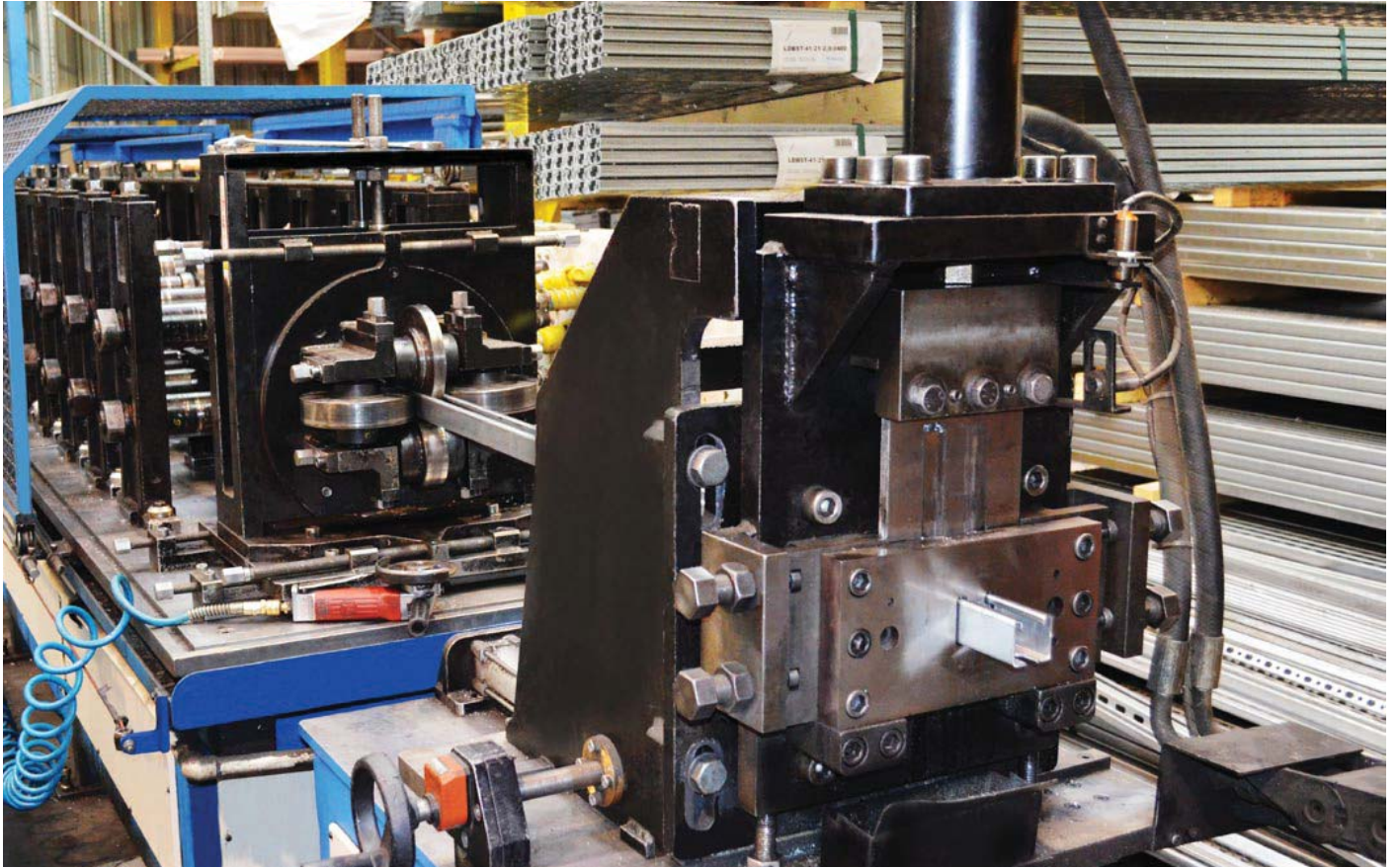




ABOUT COMPANY



About US

Euro Steel Supplies is a trusted manufacturer in cold rolled steel technology with a production and warehousing facility located in JAFZA. We deliver innovative solutions with application across sectors as diverse as construction, oil & gas and Industrial.

Our Goal is to achieve excellence in everything we do from product design and manufacturing process to quality assurance.

Euro Steel Supplies Mainly Focuses on three different type of segments in the market:

- Oil & Gas
- Building Construction
- Industrial

Oil and Gas

70%

Construction Building

92%

Industrial

65%



Euro Steel Supplies designs, proposes and supplies the most cost-efficient and professional solution to meet customer satisfaction..

COMPLETE STRUT SUPPORT SYSTEM



- Sheet thickness from 1.6 to 2.5 mm.
- High load-bearing capacity.
- Wide range of fittings, brackets, washers, connectors, clamps for connecting STRUT mounting channels.
- Available versions hot-dip galvanized, hot-dip galvanized after fabrication.
- Slide nuts for fixing the threaded rod to the supporting profiles.

CANTILEVER SUPPORT ARMS



- Cantilever support arms, brackets for mounting rectangular ducts directly on the wall.
- Wide range of channels: 20x30 mm, 30x30 mm, 30x45 mm, 41x21 mm and 41x41 mm.
- Robust construction, heavy load capacity.
- Cantilever arms for connecting the mounting channel to the ground.
- Precise and smooth adjustment thanks to bean-shaped holes.
- Products tested by The Building Research Institute.

ACCESSORIES FOR ROUND VENTILATION DUCT SUSPENSION



- Wide range of suspension rings' diameters: from 80 to 1600 mm.
- Heavy-duty suspension clamps.
- Smooth height adjustment with perforated suspension tape.
- Duct supports for round duct used to fix ducts standing on joists.
- V-type and R-type suspension brackets for different types of roofs.
- Available versions: made of stainless steel.

ACCESSORIES FOR RECTANGULAR VENTILATION DUCT SUSPENSION



- Quick assembly of the system with L-type, Z-type, V-type suspension brackets.
- Installation of suspensions using threaded rods and screws or nuts.
- Mounting channel: 30x20 mm, 30x30 mm, 30x45 mm, 41x21 mm and 41x41 mm.
- Clamps for connecting rectangular ducts.
- Profiles for joining rectangular ducts in hard-to-reach places.

FLEXIBLE DUCT ASSEMBLY



- Wide range of tightening band diameters: from 50 to 660 mm.
- Bands available in rolls.
- Band width: 9 mm.
- Band has lifted edges and is equipped with worm gear clamp to ensure tight and durable connection.
- Stainless steel bands are available.
- Alternative option - plastic band clips, made of nylon.

FASTENERS



- Threaded rods of various thickness, used for connection to ventilation clamps, beam clamps, suspension brackets, as well as slide nuts and channels.
- Nuts for joining together two threaded rod sections.
- Drop-in anchors and rawplugs for various materials.
- Different types of mounting screws, e.g. double-sided screw bolts.
- Steel nuts used to install ventilation elements.

ROOF SUPPORT SYSTEM



- Roof feet are intended to support heavy ventilation equipment.
- The construction of the roof foot provides even distribution to a larger roof plane.
- Various roof foot lengths are available.
- Resistant to humidity and temperatures ranging from -40°C to +80°C.
- Anti-vibration mats effectively reduce vibration and noise.

ROOF SUPPORT MODULAR FRAMES



- Versatile support for heavy-duty mechanical services and exceptional load distribution.
- Wide range of supports, available sets: H, 4, 6, 8.
- Simple and quick assembly.
- Possibility of any configuration.
- The maximum load for set 8 is 950 kg. Dimensions of the set: 3600x800 mm.

Mounting accessories

Mounting accessories create a set of tools for easy and safe suspension of ventilation ducts, both - round and rectangular. In addition, they allow for quick and easy suspension of the elements in various ways to match the conditions on construction site.

The mounting accessories based on LDB channel with a full set of channel connection elements under different angles allows to prepare duct fixtures tailored to each individual interior.

Thanks to the various shapes and multiple applications, they allow to create tailor-made structures, which perfectly match the individual features of a given installation. All components are made of galvanized steel as a standard.



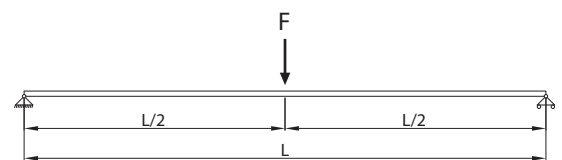
Standards & Certifications

Our STRUT support system and fixing elements FIX®system made of galvanized and stainless steel have Technical Approval of Building Research Institute: **RT ITB - 1112/2008**. Mounting STRUT accessories are made of carbon steel and are coated with electrogalvanized zinc in accordance with **DIN EN ISO 2081**. Furthermore, STRUT support system is **TÜV certified**.

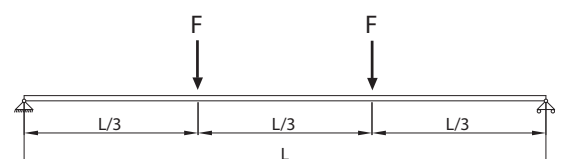


Strength

Below, there are presented examples of permissible load mounting channel LDBST for different load patterns.

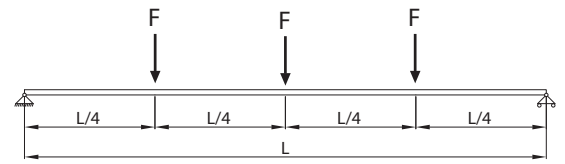


Support spacing L [mm]	Permissible load F [N]			
	LDBST-41-21-2,0	LDBST-41-21-2,5	LDBST-41-41-2,0	LDBST-41-41-2,5
250	3251	3746	12167	14613
350	2322	2676	8691	10438
500	1388	1858	6084	7307

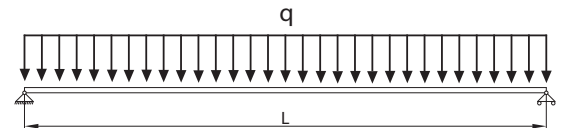


Support spacing L [mm]	Permissible load F [N]			
	LDBST-41-21-2,0	LDBST-41-21-2,5	LDBST-41-41-2,0	LDBST-41-41-2,5
250	2438	2810	9125	10960
350	1675	2007	6518	7828
500	821	1098	4342	5148

Support spacing L [mm]	Permissible load F [N]			
	LDBST-41-21-2,0	LDBST-41-21-2,5	LDBST-41-41-2,0	LDBST-41-41-2,5
250	1625	1873	6084	7307
350	1161	1338	4345	5219
500	585	782	3042	3653



Support spacing L [mm]	Permissible load F [N]			
	LDBST-41-21-2,0	LDBST-41-21-2,5	LDBST-41-41-2,0	LDBST-41-41-2,5
250	1625	1873	6084	7307
350	1161	1338	4345	5219
500	585	782	3042	3653



Permissible load for CLR and CLRL suspension clamps

Diameter [mm]	Characteristic load-carrying capacity F_k [kN]		Recommended load-carrying capacity F_{zul} [kN]	
	CLR	CLRL	CLR	CLRL
100	1,4	0,8	0,7	0,4
250	1,5	1,0	0,7	0,5
315	1,0	1,5	0,5	0,75



Permissible load for suspension brackets

Bracket type	Characteristic load-carrying capacity F_k [kN]	Recommended load-carrying capacity F_{zul} [kN]
Z-type (EQZS)	1,2	0,6
L-type (EQLS)	1,2	0,6
V-type (EQVS)	1,0	0,5

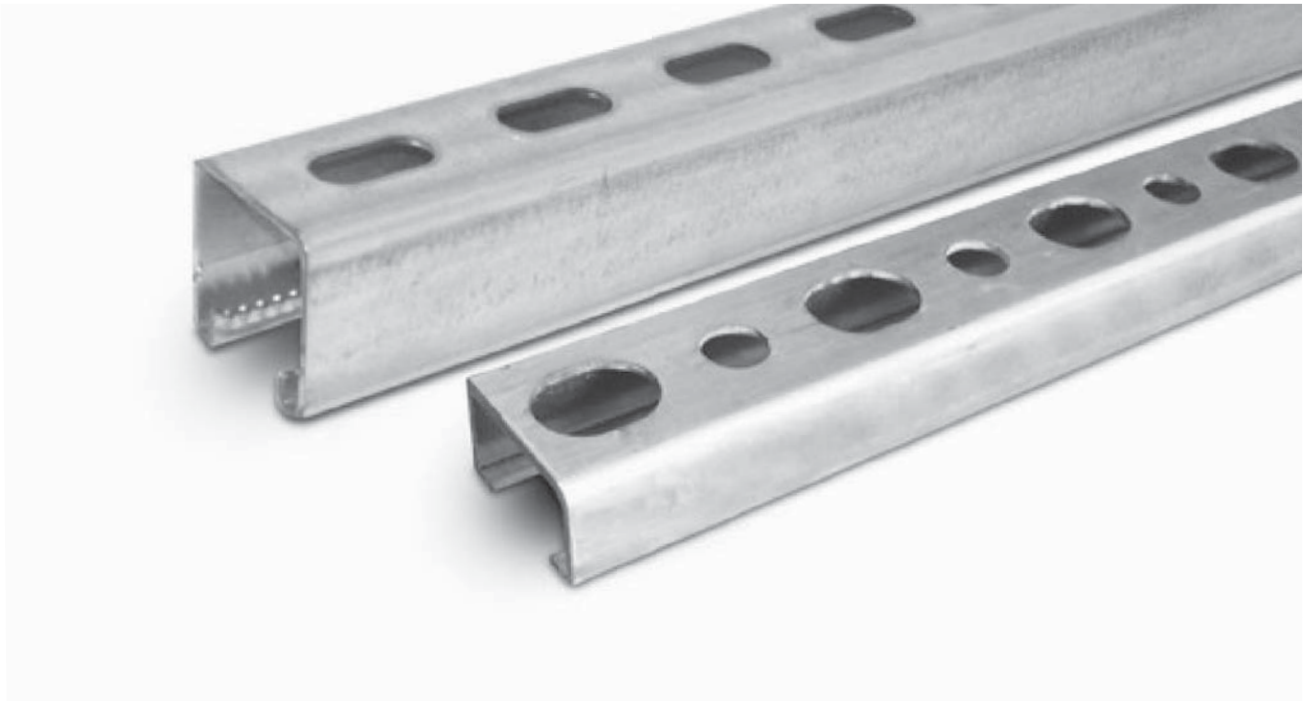


Permissible maximum load for roof support modular frameworks

Set	Maximum load [kg]
ST-ROF-SET-H	150
ST-ROF-SET-4	480
ST-ROF-SET-6	720
ST-ROF-SET-8	950

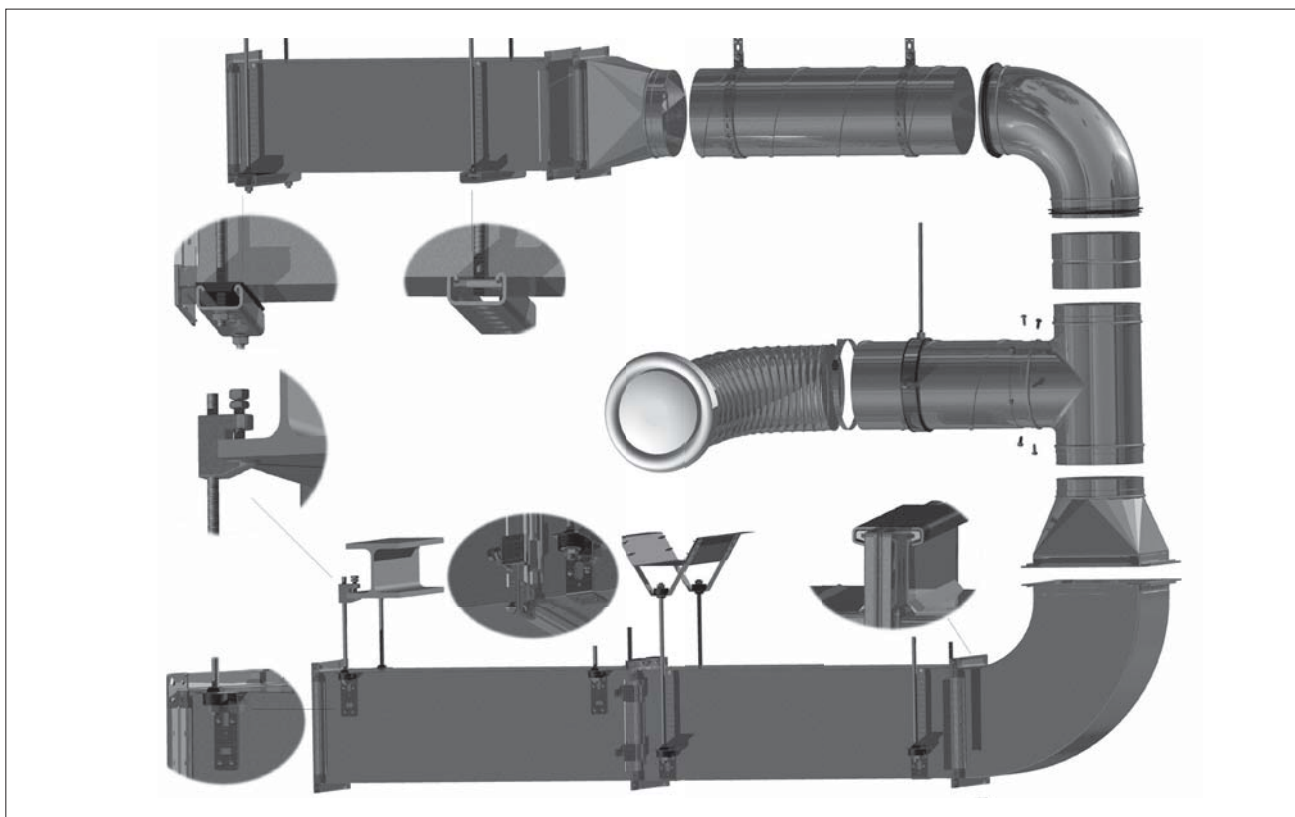


SUPPORT SYSTEM



We reserve the right to make changes in the dimensions and technical data products due to their continuous improvement

About the System



About the System

The mounting accessories provide a toolkit for easy and safe suspension of ventilation ducts, both circular and rectangular.

Dimensions

All the values are based on the tables and information provided in a product's catalogue datasheet

Installation Guide

Each component fits the shape of the ventilation duct. Joined together, individual parts of the suspension provide an installation system for duct suspension.

Benefits of Use

All the components are suited for the size, weight and features of ventilation ducts. They permit easy and quick suspension of components, in multiple ways depending on the site conditions.

STRUT channel

LDBST

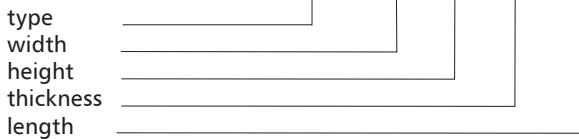


Description

The LDB-ST section is used for suspension of ducts, devices and any equipment of ventilation systems. Moreover the whole length of LDB-ST is provided with special incisions, thanks to which use of SNP and SNL nut is possible while connecting with the PG threaded rods. The section is following the DIN EN10025 standard of production with grade of 275JR & available in material finishing of HDG according to ASTM A123

Example identification

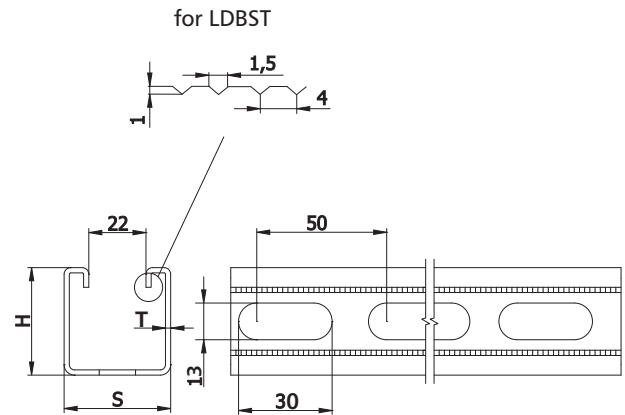
Product code: **LDBST - 41 - 41 - 2,0 - 0300**



For different finishing, add HDG or SS with the item #.

i.e: 10077 HDG, Hot Dipped Galvanized
10077 SS, Stainless Steel

Dimensions

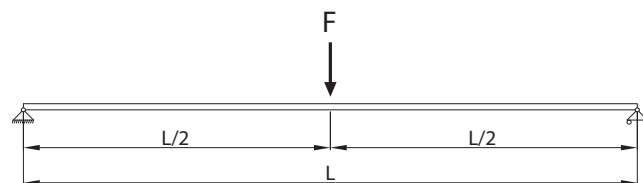


code	S [mm]	H [mm]	T [mm]	L [mb]	Item #
LDBST-41-21-2,0-0300	41	21	2,00	3,00	10092
LDBST-41-21-2,0-0400	41	21	2,00	4,00	10093
LDBST-41-21-2,0-0600	41	21	2,00	6,00	10094
LDBST-41-21-2,5-0300	41	21	2,50	3,00	10095
LDBST-41-21-2,5-0400	41	21	2,50	4,00	10096
LDBST-41-21-2,5-0600	41	21	2,50	6,00	10097
LDBST-41-41-2,0-0300	41	41	2,00	3,00	10098
LDBST-41-41-2,0-0400	41	41	2,00	4,00	10099
LDBST-41-41-2,0-0600	41	41	2,00	6,00	10100
LDBST-41-41-2,5-0300	41	41	2,50	3,00	10101
LDBST-41-41-2,5-0400	41	41	2,50	4,00	10102
LDBST-41-41-2,5-0600	41	41	2,50	6,00	10103

STRUT channel LDBST

Permissible load mounting profiles LDBST for different load patterns

Distance between supports L [mm]	load patterns F [N]			
	LDBST-41-21-2,0	LDBST-41-21-2,5	LDBST-41-41-2,0	LDBST-41-41-2,5
250	3251	3746	12167	14613
300	2709	3122	10139	12178
350	2322	2676	8691	10438
400	2032	2341	7605	9133
450	1714	2081	6760	8118
500	1388	1858	6084	7307
600	964	1290	5070	6050
700	708	948	3749	4445
800	542	726	2870	3403
900	428	573	2268	2689
1000	347	464	1837	2178
1200	241	322	1276	1513
1400	177	237	937	1111
1600	136	181	718	847
1800	107	143	567	672
2000	86	116	459	544
2250	68	92	362	430
2500	55	74	293	348
2750	46	61	242	288
3000			204	242
3250			173	206
3500			149	178
3750			130	155
4000			115	136
4250			101	121
4500			91	107
4750			81	96
5000			73	87
5250			67	79
5500			61	72
5750			55	65
6000			51	60



STRUT channel LDBST

Permissible load mounting profiles LDBST for different load patterns

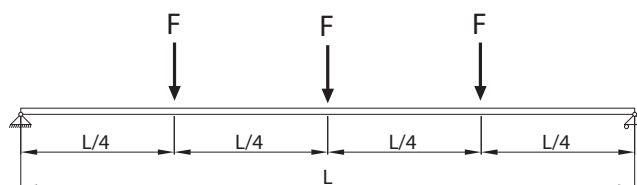
Distance between supports L [mm]	load patterns F [N]			
	LDBST-41-21-2,0	LDBST-41-21-2,5	LDBST-41-41-2,0	LDBST-41-41-2,5
250	2438	2810	9125	10960
300	2032	2341	7605	9133
350	1675	2007	6518	7828
400	1282	1716	5703	6850
450	1013	1356	5070	6089
500	821	1098	4342	5148
600	570	763	3016	3575
700	419	560	2216	2627
800	321	429	1696	2011
900	253	339	1341	1589
1000	205	275	1086	1288
1200	143	191	754	894
1400	105	140	554	657
1600	80	107	424	503
1800	63	85	335	397
2000	51	69	271	322
2250		54	214	254
2500			174	206
2750			144	170
3000			121	143
3250			103	122
3500			89	105
3750			76	90
4000			68	80
4250			60	71
4500			54	64
4750			48	57
5000			43	51



STRUT channel LDBST

Permissible load mounting profiles LDBST for different load patterns

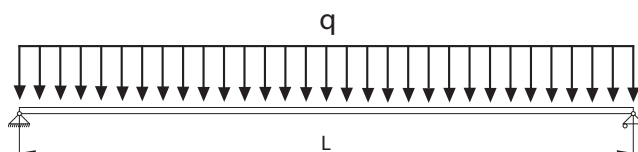
Distance between supports L [mm]	load patterns F [N]			
	LDBST-41-21-2,0	LDBST-41-21-2,5	LDBST-41-41-2,0	LDBST-41-41-2,5
250	1625	1873	6084	7307
300	1355	1561	5070	6089
350	1161	1338	4345	5219
400	914	1171	3802	4567
450	722	966	3380	4059
500	585	782	3042	3653
600	406	543	2149	2548
700	298	399	1579	1872
800	228	306	1209	1433
900	181	242	955	1132
1000	146	196	774	917
1200	102	136	537	637
1400	75	100	395	468
1600	57	76	302	358
1800	45	60	239	283
2000		49	193	229
2250			153	181
2500			124	147
2750			102	121
3000			86	102
3250			73	87
3500			63	75
3750			55	65
4000			48	57
4250			43	51
4500				45



STRUT channel LDBST

Permissible load mounting profiles LDBST for different load patterns

Distance between supports L [mm]	load patterns F [N]			
	LDBST-41-21-2,0	LDBST-41-21-2,5	LDBST-41-41-2,0	LDBST-41-41-2,5
250	6502	7492	24335	29226
300	5418	6244	20279	24355
350	4534	5352	17382	20876
400	3472	4646	15209	18266
450	2743	3671	13519	16237
500	2222	2973	11758	13941
600	1543	2065	8166	9682
700	1134	1517	5999	7113
800	868	1161	4593	5446
900	686	918	3629	4303
1000	555	743	2940	3486
1200	386	516	2041	2421
1400	283	379	1500	1778
1600	217	290	1148	1361
1800	171	229	907	1076
2000	139	186	735	871
2250	110	147	581	688
2500	89	119	470	558
2750	73	98	389	461
3000	62	83	327	387
3250	53	70	278	330
3500	45	61	240	285
3750			209	248
4000			184	218
4250			163	193
4500			145	172
4750			130	154
5000			118	139
5250			107	126
5500			97	115
5750			89	105
6000			82	97



Double STRUT channel

LDBDT



Description

LDBDT double Strut channels are available in 3 to 6 m long and 2.0, and 2.5 mm thick sections. All LDB double Strut channels are made of two spot-welded LDBST Strut channels. They can carry much higher loads compared to single Strut channels.

Note:

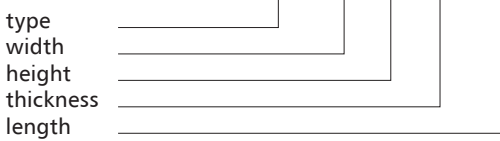
Outdoor roof structures require LDBDO double Strut channels with a full hot-dip galvanic coating which provides long-terms resistance to outdoor weathering.

Available materials — Product code example

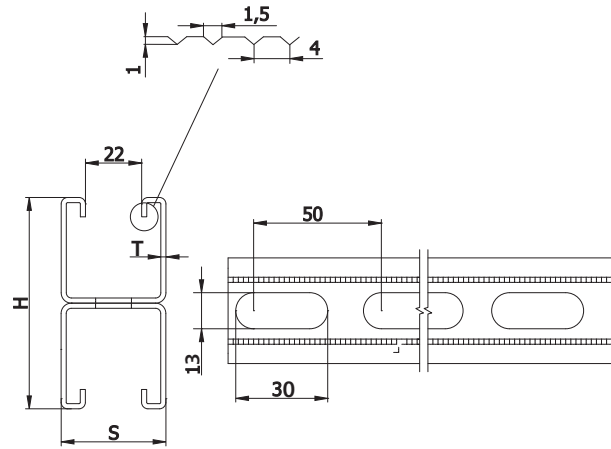
LDBDT-... — galvanized steel sheet
 LDBDO-... — hot-dip galvanized steel sheet

Product code example

Product code: **LDBDT - 41 - 41 - 2,0 - 0300**



Dimensions



Product code	S (mm)	H (mm)	T (mm)	L (m)	Item #
LDBDT-41-21-2,0-0300	41	82	2.00	3.00	10423
LDBDT-41-21-2,0-0400	41	82	2.00	4.00	10424
LDBDT-41-21-2,0-0600	41	82	2.00	6.00	10425
LDBDT-41-21-2,5-0300	41	82	2.50	3.00	10426
LDBDT-41-21-2,5-0400	41	82	2.50	4.00	10427
LDBDT-41-21-2,5-0600	41	82	2.50	6.00	10428

Standard sections are 6 m long.

Double channel strut for ventilation systems

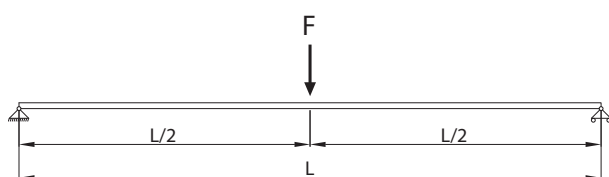
LDBDT

Maximum acceptable load capacity of LDBDT channels in various load cases

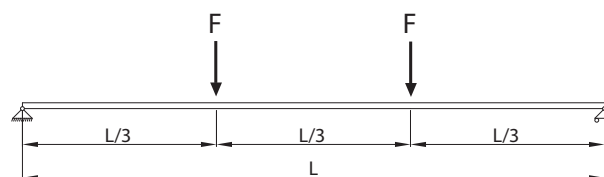
Support spacing <i>L</i> (mm)	Maximum load <i>F</i> (N)	
	LDBDT-41-41-2,0	LDBDT-41-41-2,5
250	42321	43783
300	35270	36492
350	30230	31278
400	26450	27364
450	23515	24325
500	21162	21896
600	17634	18129
700	13042	13319
800	9981	10198
900	7890	8058
1000	6390	6525
1200	4438	4532
1400	3258	3329
1600	2687	2709
1800	2388	2416
2000	2149	2175
2250	1907	1932
2500	1713	1740
2750	1558	1584
3000	1403	1423
3250	1189	1212
3500	1026	1047
3750	896	911
4000	794	801
4250	695	711
4500	628	628
4750	558	567
5000	505	512
5250	464	463
5500	418	425
5750	377	383
6000	350	354

Support spacing <i>L</i> (mm)	Maximum load <i>F</i> (N)	
	LDBDT-41-41-2,0	LDBDT-41-41-2,5
250	31740	32840
300	26450	27364
350	22674	23457
400	19839	20523
450	17634	18246
500	15101	15426
600	10489	10713
700	7708	7869
800	5898	6025
900	4664	4760
1000	3778	3859
1200	2705	2739
1400	2318	2350
1600	2027	2055
1800	1800	1824
2000	1618	1643
2250	1437	1458
2500	1197	1211
2750	992	1002
3000	833	841
3250	711	715
3500	612	616
3750	522	529
4000	470	469
4250	414	416
4500	370	375
4750	332	336
5000	297	300

Load diagram



Load diagram



Double channel strut for ventilation systems

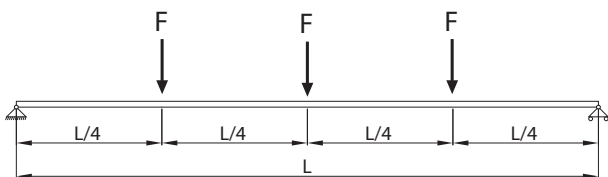
LDBDT

Maximum acceptable load capacity of LDBDT channels in various load cases

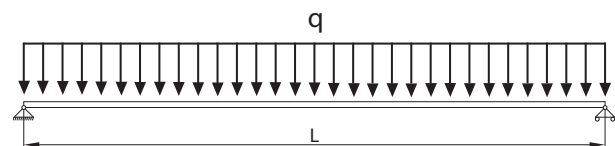
Support spacing <i>L</i> (mm)	Maximum load <i>F</i> (N)	
	LDBDT-41-41-2,0	LDBDT-41-41-2,5
250	21162	21896
300	17634	18246
350	15116	15638
400	13223	13686
450	11759	12164
500	10581	10944
600	7474	7633
700	5491	5609
800	4207	4294
900	3320	3392
1000	2691	2749
1200	1867	1908
1400	1535	1554
1600	1342	1360
1800	1194	1208
2000	1070	1088
2250	962	974
2500	854	865
2750	701	711
3000	592	602
3250	503	511
3500	433	442
3750	378	388
4000	331	335
4250	295	298

Support spacing <i>L</i> (mm)	Maximum load <i>F</i> (N)	
	LDBDT-41-41-2,0	LDBDT-41-41-2,5
250	84647	87569
300	70536	72973
350	60460	62549
400	52904	54729
450	47021	48648
500	40898	41770
600	28407	29012
700	20866	21314
800	15975	16317
900	12624	12894
1000	10226	10446
1200	7162	7257
1400	6142	6217
1600	5371	5439
1800	4772	4838
2000	4298	4352
2250	3824	3866
2500	3235	3283
2750	2676	2709
3000	2253	2277
3250	1914	1941
3500	1654	1674
3750	1440	1457
4000	1265	1284
4250	1121	1134
4500	996	1014
4750	894	907
5000	812	816
5250	739	739
5500	667	676
5750	612	618
6000	566	570

Load diagram



Load diagram



STRUT channel LDB-UL



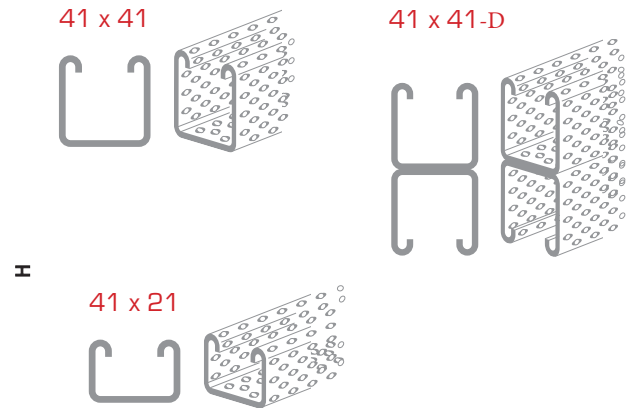
Description

The LDB-UL Ultra Channel is a direct replacement for all BS compliant 41x41 and 41x21 strut channel sections in 2.5mm and fits all existing ancillary components. We provide plain, slotted and B-to-B configurations in pre-galvanised, post-galvanised, hot-rolled and stainless steel material, so there's a strut for all your applications. All this means, that when selecting UltraSTRUT™ you get to benefit from the cost savings without having to worry about performance. LDB-UL uses less steel for any given length, so not only does this provide you with cost savings - it means less material is used.

For different finishing, add HDG or SS with the item #.

i.e: 10077 HDG, Hot Dipped Galvanized
10077 SS, Stainless Steel

Dimensions



code	W [mm]	H [mm]	T [mm]	L [mb]	Item #
LDB-UL 41x41	41	21	2,00	3,00	11000
LDB-UL 41x21	41	21	2,00	4,00	11001
LDB-UL 41x41-D	41	21	2,00	6,00	11002
LDB-UL 41x21-D	41	21	2,50	3,00	11003

STRUT channel LDB-UL

Permissible load mounting profiles LDB-UL for different load patterns



41 x 41 UNIFORMLY DISTRIBUTED LOAD

SPAN MM	SAFE LOAD					
	41 x 41 PLAIN		41 x 41 SLOTTED		41 x 41 BACK 2 BACK	
	KG	KN	KG	KN	KG	KN
500	941.6	9.234	876.6	8.597	2518.62	24.699
1000	470.8	4.617	438.3	4.298	1259.31	12.350
1500	313.9	3.078	292.2	2.866	839.54	8.233
2000	235.4	2.308	219.2	2.149	629.65	6.175
2500	188.3	1.847	175.3	1.719	503.72	4.940
3000	156.9	1.539	146.1	1.433	419.77	4.117

41 x 21 UNIFORMLY DISTRIBUTED LOAD

SPAN MM	SAFE LOAD					
	41 x 21 PLAIN		41 x 21 SLOTTED		41 x 21 BACK 2 BACK	
	KG	KN	KG	KN	KG	KN
500	346.8	3.401	323.0	3.168	869.3	8.525
1000	173.4	1.700	161.5	1.584	434.7	4.263
1500	115.6	1.134	107.7	1.056	289.8	2.842
2000	86.7	0.850	80.8	0.792	217.3	2.131
2500	69.4	0.680	64.6	0.634	173.9	1.705
3000	57.8	0.567	53.8	0.528	144.9	1.421

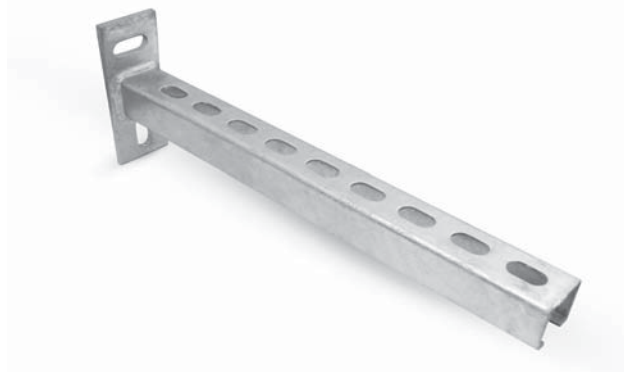
41 x 41 CENTRALLY CONCENTRATED LOAD

SPAN MM	SAFE LOAD					
	41 x 41 PLAIN		41 x 41 SLOTTED		41 x 41 BACK 2 BACK	
	KG	KN	KG	KN	KG	KN
500	470.8	4.617	438.3	4.298	1259.31	12.350
1000	235.4	2.308	219.2	2.149	629.65	6.175
1500	156.9	1.539	146.1	1.433	419.77	4.117
2000	117.7	1.154	109.6	1.075	314.83	3.087
2500	94.2	0.923	87.7	0.860	251.86	2.470
3000	78.5	0.769	73.1	0.716	209.88	2.058

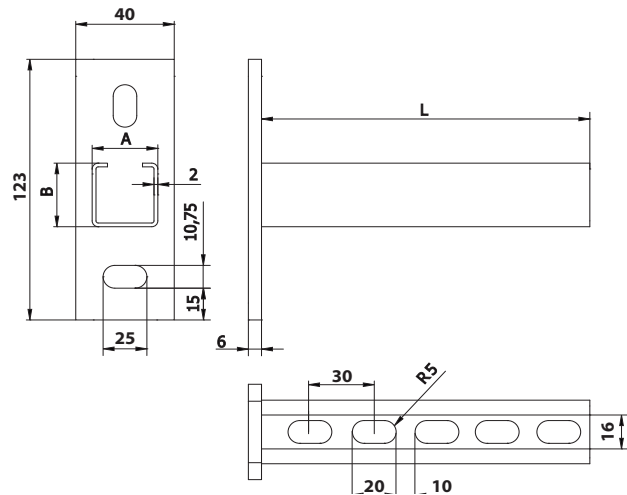
41 x 21 CENTRALLY CONCENTRATED LOAD

SPAN MM	SAFE LOAD					
	41 x 21 PLAIN		41 x 21 SLOTTED		41 x 21 BACK 2 BACK	
	KG	KN	KG	KN	KG	KN
500	173.4	1.700	161.5	1.584	434.7	4.263
1000	86.7	0.850	80.8	0.792	217.3	2.131
1500	57.8	0.567	53.8	0.528	144.9	1.421
2000	43.3	0.425	40.4	0.396	108.7	1.066
2500	34.7	0.340	32.3	0.317	86.9	0.853
3000	28.9	0.283	26.9	0.264	72.4	0.710

Console W-LDB



Dimensions



Description

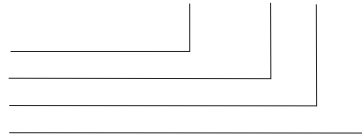
Console W-LDB is used for mounting rectangular ducts.

Example identification

Product code:

W-LDB - A - B - L

type
width
height
length



For different finishing, add HDG or SS with the item #.

i.e: 10077 HDG, Hot Dipped Galvanized
10077 SS, Stainless Steel

typ	A [mm]	B [mm]	L [mm]	Item #
W-LDB-30-30-150	30	30	150	10104
W-LDB-30-30-200	30	30	200	10105
W-LDB-30-30-250	30	30	250	10106
W-LDB-30-30-300	30	30	300	10107
W-LDB-30-30-350	30	30	350	10108
W-LDB-30-30-400	30	30	400	10109
W-LDB-30-30-450	30	30	450	10110
W-LDB-30-30-500	30	30	500	10111
W-LDB-30-30-550	30	30	550	10112
W-LDB-30-30-600	30	30	600	10113
W-LDB-30-30-650	30	30	650	10114
W-LDB-30-30-700	30	30	700	10115
W-LDB-30-30-750	30	30	750	10116

typ	A [mm]	B [mm]	L [mm]	Item #
W-LDB-41-21-150	41	21	150	10117
W-LDB-41-21-200	41	21	200	10118
W-LDB-41-21-250	41	21	250	10119
W-LDB-41-21-300	41	21	300	10120
W-LDB-41-21-350	41	21	350	10121
W-LDB-41-21-400	41	21	400	10122
W-LDB-41-21-450	41	21	450	10123
W-LDB-41-21-500	41	21	500	10124
W-LDB-41-21-550	41	21	550	10125
W-LDB-41-21-600	41	21	600	10126
W-LDB-41-21-650	41	21	650	10127
W-LDB-41-21-700	41	21	700	10128
W-LDB-41-21-750	41	21	750	10129
W-LDB-41-41-150	41	41	150	10130
W-LDB-41-41-200	41	41	200	10131
W-LDB-41-41-250	41	41	250	10132
W-LDB-41-41-300	41	41	300	10133
W-LDB-41-41-350	41	41	350	10134
W-LDB-41-41-400	41	41	400	10135
W-LDB-41-41-450	41	41	450	10136
W-LDB-41-41-500	41	41	500	10137
W-LDB-41-41-550	41	41	550	10138
W-LDB-41-41-600	41	41	600	10139
W-LDB-41-41-650	41	41	650	10140
W-LDB-41-41-700	41	41	700	10141
W-LDB-41-41-750	41	41	750	10142

Console

W-LDB

Permissible load profiles console W-LDB with the force of a continuous, linear

code	distance between supports L [mm]	load patterns F [N]
W-LDB-30-30-150	150	353
W-LDB-30-30-200	200	264
W-LDB-30-30-250	250	212
W-LDB-30-30-300	300	176
W-LDB-30-30-350	350	151
W-LDB-30-30-400	400	132
W-LDB-30-30-450	450	118
W-LDB-30-30-500	500	100
W-LDB-30-30-550	550	83
W-LDB-30-30-600	600	69
W-LDB-30-30-650	650	59
W-LDB-30-30-700	700	51
W-LDB-30-30-750	750	44

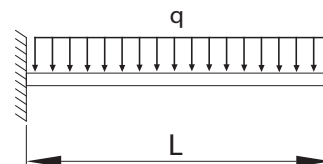
Load diagram



Permissible load profiles console W-LDB with the force of a continuous, linear

code	distance between supports L [mm]	load patterns F [N]
W-LDB-30-30-150	150	705
W-LDB-30-30-200	200	529
W-LDB-30-30-250	250	423
W-LDB-30-30-300	300	353
W-LDB-30-30-350	350	302
W-LDB-30-30-400	400	264
W-LDB-30-30-450	450	235
W-LDB-30-30-500	500	212
W-LDB-30-30-550	550	192
W-LDB-30-30-600	600	176
W-LDB-30-30-650	650	158
W-LDB-30-30-700	700	136
W-LDB-30-30-750	750	119

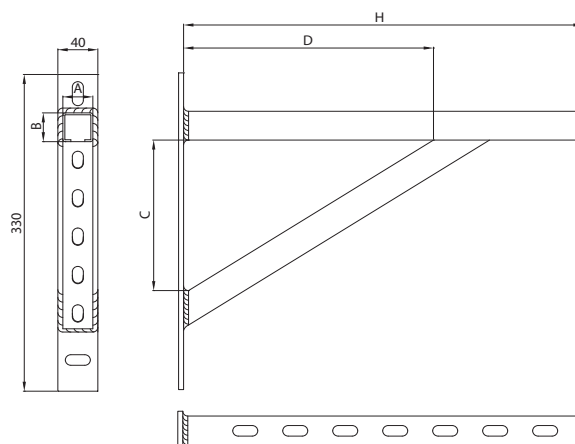
Load diagram



Console WK-LDB



Dimensions

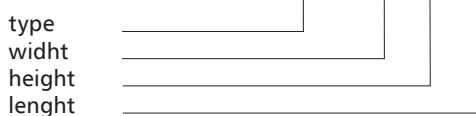


Description

Console WK-LDB is used for mounting rectangular ducts.

Example identification

Product code: **WK-LDB - A - B - H**



For different finishing, add HDG or SS with the item #.

i.e: 10077 HDG, Hot Dipped Galvanized
10077 SS, Stainless Steel

type	A [mm]	B [mm]	C [mm]	D [mm]	H [mm]	Item #
WK-LDB-30-30-400	30	30	160	245	400	10143
WK-LDB-30-30-500	30	30	160	245	500	10144
WK-LDB-30-30-600	30	30	195	340	600	10145
WK-LDB-30-30-700	30	30	195	325	700	10146
WK-LDB-41-21-400	41	21	160	245	400	10147
WK-LDB-41-21-500	41	21	160	245	500	10148
WK-LDB-41-21-600	41	21	195	340	600	10149
WK-LDB-41-21-700	41	21	195	325	700	10150
WK-LDB-41-41-400	41	41	160	245	400	10151
WK-LDB-41-41-500	41	41	160	245	500	10152
WK-LDB-41-41-600	41	41	195	340	600	10153
WK-LDB-41-41-700	41	41	195	325	700	10154

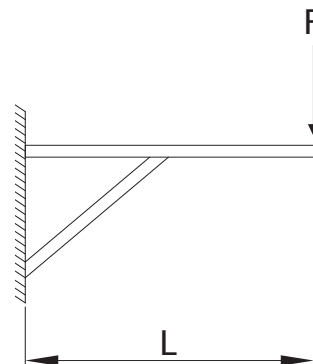
Console

WK-LDB

Permissible load Console WK-LDB the action of a concentrated force

Code	Support spacing L [mm]	Permissible load F [N]
WK-LDB-30-30-400	400	1748
WK-LDB-30-30-500	500	971
WK-LDB-30-30-600	600	950
WK-LDB-30-30-700	700	594

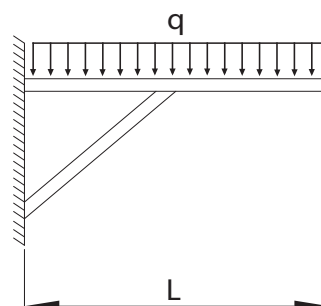
Load diagram



Permissible load Console WK-LDB with the force of a continuous, linear

Code	Support spacing L [mm]	Permissible load q [N]
WK-LDB-30-30-400	400	3495
WK-LDB-30-30-500	500	1942
WK-LDB-30-30-600	600	1899
WK-LDB-30-30-700	700	1324

Load diagram



Foot ST-P



Description

The ST-P foot is used as a base to fasten the LDP profile.

Example identification

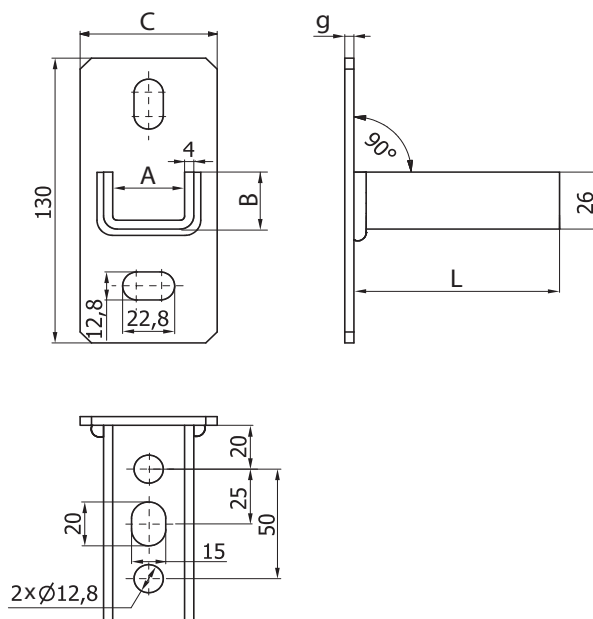
Product code: **ST-P - 30**

type _____
width _____

For different finishing, add HDG or SS with the item #.

i.e: 10077 HDG, Hot Dipped Galvanized
10077 SS, Stainless Steel

Dimensions



type	A [mm]	B [mm]	g [mm]	L [mm]	Item #	
ST-P-30	31	26	60	90	4	10155
ST-P-40	41	26	70	90	4	10156

Steel coupling pad type L

LDB-BE



Description

Steel coupling pad LDB-BE is an indispensable component of professional fastening frame based on LDB profiles. It is made from galvanized steel.

Example identification

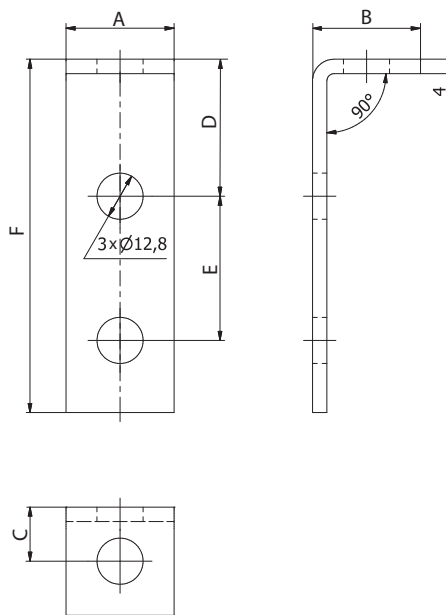
Product code: **LDB-BE-30-1-2**

type _____

For different finishing, add HDG or SS with the item #.

i.e: 10077 HDG, Hot Dipped Galvanized
10077 SS, Stainless Steel

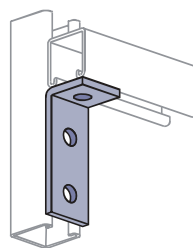
Dimensions



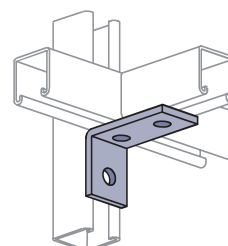
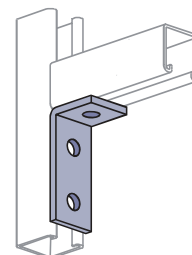
typ	A [mm]	B [mm]	C [mm]	D [mm]	E [mm]	F [mm]	Item #
LDB-BE-30-1-2	30	30	15	38	40	98	10157
LDB-BE-30-2-1	30	50	30	15	40	75	10158

Installation method

LDB-BE-30-1-2



LDB-BE-30-2-1



Steel coupling pad type L

LDB-BE



Description

Steel coupling pad LDB-BE is an indispensable component of professional fastening frame based on LDB profiles. It is made from galvanized steel & available in HDG finishing 56um according ASTM A153.

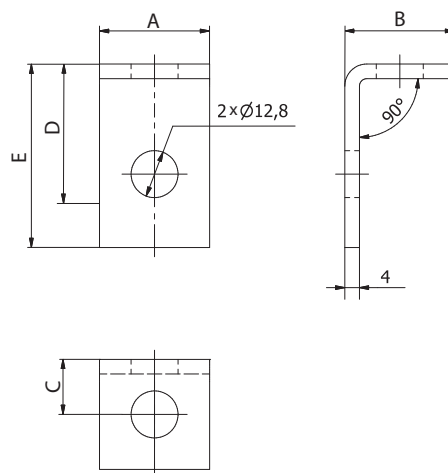
Example identification

Product code: **LDB-BE-41-1-1**
type

For different finishing, add HDG or SS with the item #.

i.e: 10077 HDG, Hot Dipped Galvanized
10077 SS, Stainless Steel

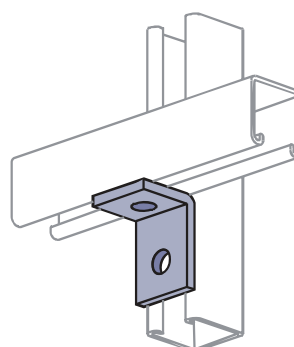
Dimensions



Type	A [mm]	B [mm]	C [mm]	D [mm]	E [mm]	Item #
LDB-BE-41-1-1	41	41	15	30	50	10159

Installation method

LDB-BE-41-1-1



Steel coupling pad type L

3D Coupling LDB-PBTR-41-4



Description

3D Steel coupling pad LDB-PBTR-41-4 is an indispensable component of professional fastening frame based on LDB profiles. Assembly could be done in two & three dimensional components & it can be fitted no matter where the open side of the channel is facing. It is made from galvanized steel. Surface finishing is Available in HDG version 56um thickness - ASTM A153

Example identification

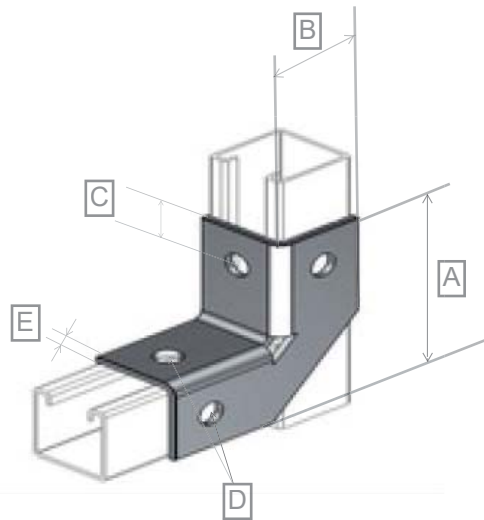
Product code: **LDB-PBTR-41-4**

type _____

For different finishing, add HDG or SS with the item #.

i.e: 10183 HDG, Hot Dipped Galvanized
10183 SS, Stainless Steel

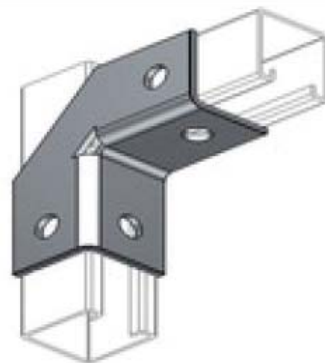
Dimensions



Type	A [mm]	B [mm]	C [mm]	D [mm]	E [mm]	Item #
LDB-PBTR-41-4	103	45	24	11.5	3	10423

Installation method

LDB-PBTR-41-4



U-type coupling

LDB-CHTB-41-6-2**Description**

LDB-CHTB coupling is a mandatory component of professional LDBST profile suspension systems. It is made of galvanized steel and available in HDG finishing 56um according to ASTM A153.

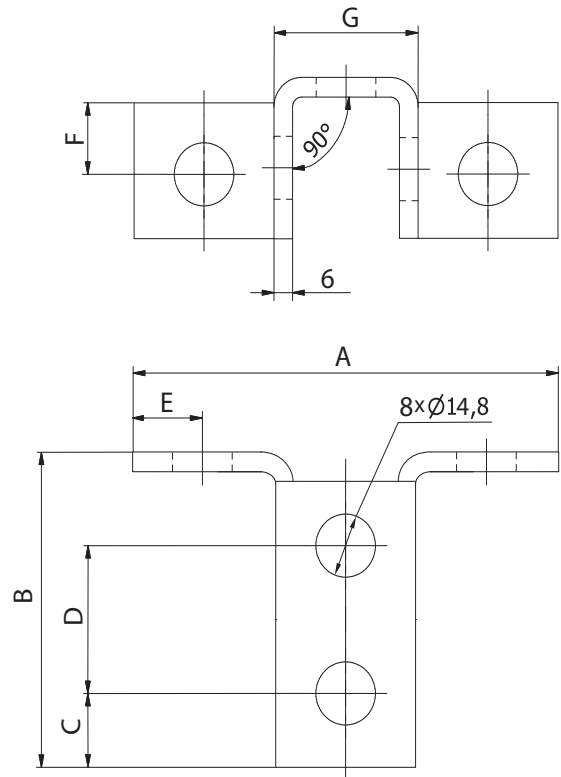
Example identification

Product code: **LDB-CHTB-41-6-2**

type _____

For different finishing, add HDG or SS with the item #.

i.e: 10077 HDG, Hot Dipped Galvanized
10077 SS, Stainless Steel

Dimensions

type	A [mm]	B [mm]	C [mm]	D [mm]	E [mm]	F [mm]	G [mm]	Item #
LDB-CHTB -41-6-2	140	100	21	48	20	20	56	10211

Steel coupling pad type T

LDB-BTRA



Description

Steel coupling pad LDB-BTRA is an indispensable component of professional fastening frame based on LDB profiles. It is made from galvanized steel.

Example identification

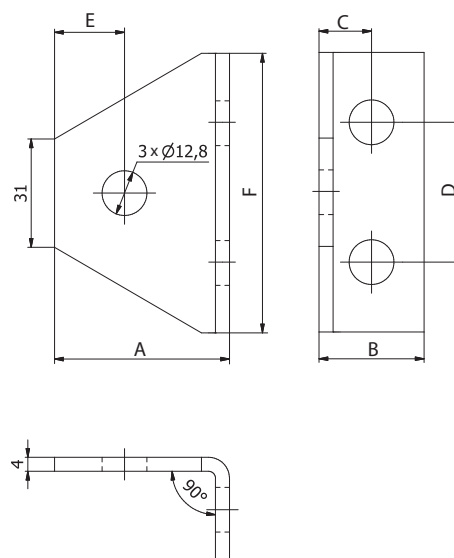
Product code: **LDB-BTRA-30-3**

type _____

For different finishing, add HDG or SS with the item #.

i.e: 10077 HDG, Hot Dipped Galvanized
10077 SS, Stainless Steel

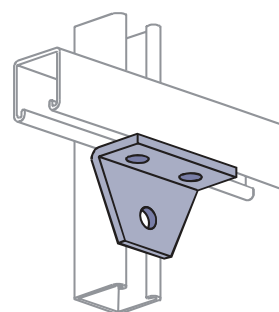
Dimensions



typ	A [mm]	B [mm]	C [mm]	D [mm]	E [mm]	F [mm]	Item #
LDB-BTRA-30-3	50	30	15	40	20	80	10160

Installation method

LDB-BTRA-30-3

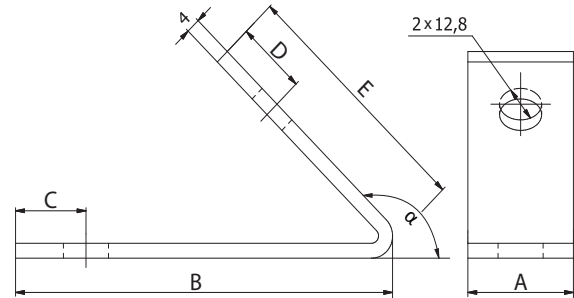


Steel coupling pad type L

LDB-BAN



Dimensions



Description

Steel coupling pad LDB-BAN is an indispensable component of professional fastening frame based on LDB profiles. It is made from galvanized steel.

Example identification

Product code: **LDB-BAN-30-30-2**

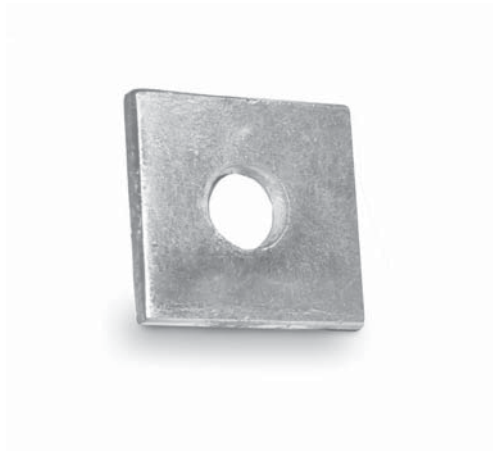
type _____

For different finishing, add HDG or SS with the item #.

i.e: 10077 HDG, Hot Dipped Galvanized
10077 SS, Stainless Steel

Type	A [mm]	B [mm]	C [mm]	D [mm]	E [mm]	α [°]	Item #
LDB-BAN-30-30-2	30	47	20	20	84	30	10161
LDB-BAN-30-45-2	30	47	20	20	84	45	10162
LDB-BAN-30-60-2	30	47	20	20	84	60	10163
LDB-BAN-30-120-2	30	107	20	20	70	120	10164
LDB-BAN-30-135-2	30	107	20	20	70	135	10165
LDB-BAN-30-150-2	30	107	20	20	70	150	10166

Flat couplings

LDB-P-41-1**Description**

LDB-P flat coupling is a mandatory component of professional LDBST profile suspension systems. It is made of galvanized steel

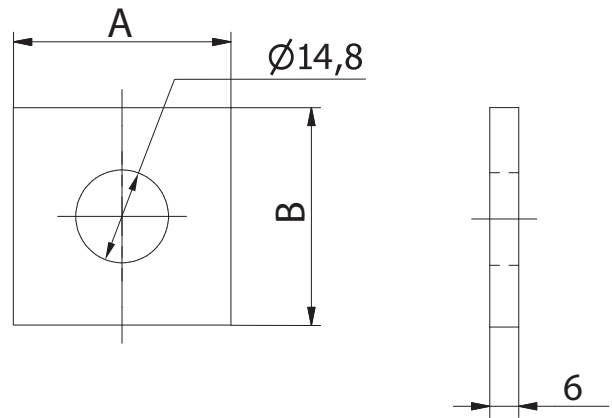
Example identification

Product code: **LDB-P-41-1**

type _____

For different finishing, add HDG or SS with the item #.

i.e: 10077 HDG, Hot Dipped Galvanized
10077 SS, Stainless Steel

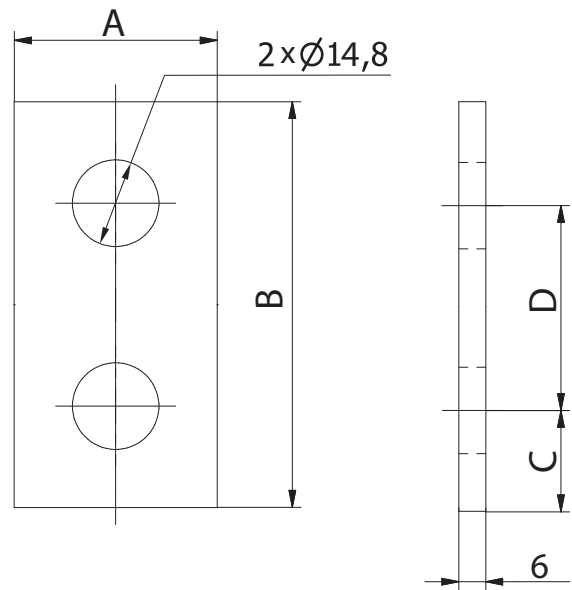
Dimensions

type	A [mm]	B [mm]	Item #
LDB-P-41-1	40	40	10167

LDB-P-41-2



Dimensions



Description

LDB-P flat coupling is a mandatory component of professional LDBST profile suspension systems. It is made of galvanized steel

Example identification

Product code: **LDB-P-41-2**

type _____

For different finishing, add HDG or SS with the item #.

i.e: 10077 HDG, Hot Dipped Galvanized
10077 SS, Stainless Steel

type	A [mm]	B [mm]	C [mm]	D [mm]	number of holes	Item #
LDB-P-41-2	40	88	20	48	2	10168
LDB-P-41-3	40	136	20	48	3	10169
LDB-P-41-4	40	184	20	48	4	10170
LDB-P-41-5	40	232	20	48	5	10171

Flat couplings

LDB-PC-41-3**Description**

LDB-P flat coupling is a mandatory component of professional LDBST profile suspension systems. It is made of galvanized steel

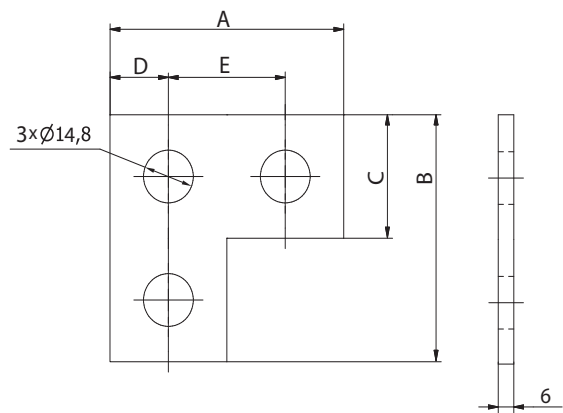
Example identification

Product code: **LDB-PC-41-3**

type _____

For different finishing, add HDG or SS with the item #.

i.e: 10077 HDG, Hot Dipped Galvanized
10077 SS, Stainless Steel

Dimensions

type	A [mm]	B [mm]	C [mm]	D [mm]	E [mm]	Item #
LDB-PC-41-3	89	89	41	21	47	10172

Flat couplings

LDB-PT-41-4



Description

LDB-P flat coupling is a mandatory component of professional LDBST profile suspension systems. It is made of galvanized steel

Example identification

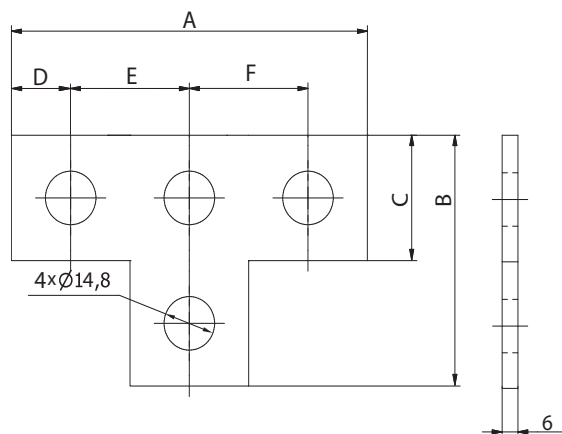
Product code: **LDB-PT-41-4**

type _____

For different finishing, add HDG or SS with the item #.

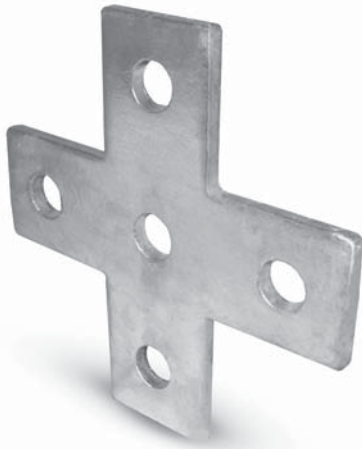
i.e: 10077 HDG, Hot Dipped Galvanized
10077 SS, Stainless Steel

Dimensions



type	A [mm]	B [mm]	C [mm]	D [mm]	E [mm]	F [mm]	Item#
LDB-PT-41-4	136	89	41	21	47	47	10173

Flat couplings

LDB-PK-41-5**Description**

LDB-P flat coupling is a mandatory component of professional LDBST profile suspension systems. It is made of galvanized steel

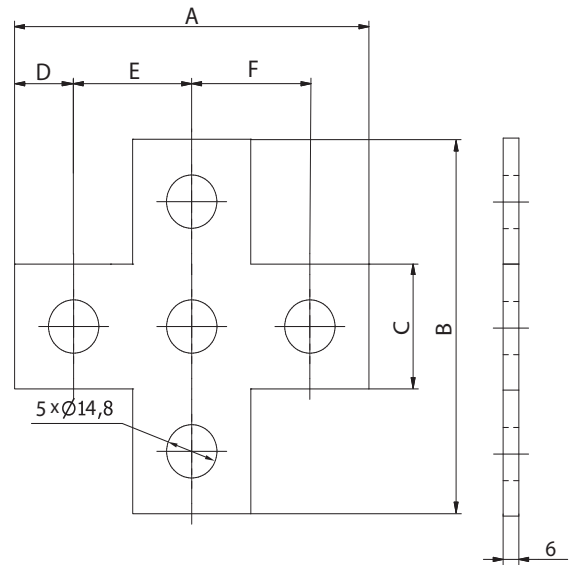
Example identification

Product code: **LDB-PK-41-5**

type _____

For different finishing, add HDG or SS with the item #.

i.e: 10077 HDG, Hot Dipped Galvanized
10077 SS, Stainless Steel

Dimensions

type	A [mm]	B [mm]	C [mm]	D [mm]	E [mm]	F [mm]	Item #
LDB-PK-41-5	136	136	41	21	47	47	10174

LDB-PTRA-45-41-4



Description

LDB-P flat coupling is a mandatory component of professional LDBST profile suspension systems. It is made of galvanized steel

Example identification

Product code: **LDB-PTRA-45-41-5**

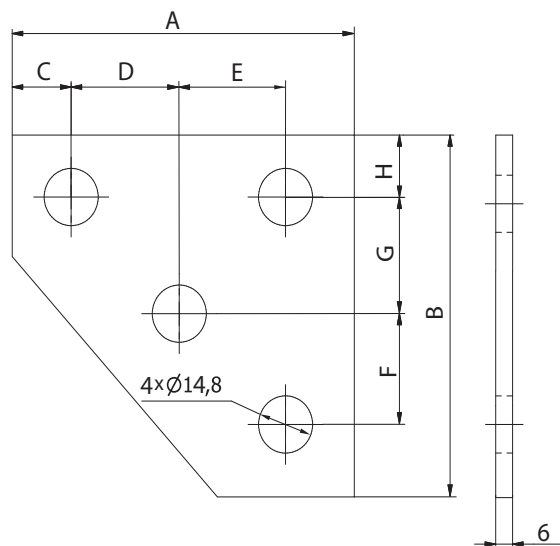
type _____

For different finishing, add HDG or SS with the item #.

i.e: 10077 HDG, Hot Dipped Galvanized
10077 SS, Stainless Steel

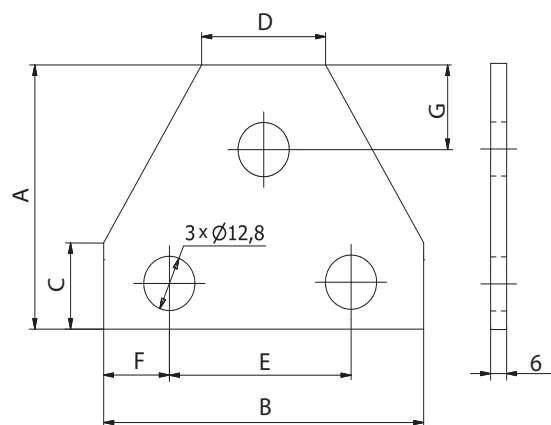
Dimensions

LDB-PTRA-45-41-4 Item # 10175



A [mm]	B [mm]	C [mm]	D [mm]	E [mm]	F [mm]	G [mm]
115	115	21	32	41	32	41

LDB-PTRA-90-41-3 Item # 10176



A [mm]	B [mm]	C [mm]	D [mm]	E [mm]	F [mm]	G [mm]
90	90	43	41	47	21	21

Flat couplings type L

LDB-BE-41



Description

LDB-P flat coupling is a mandatory component of professional LDBST profile suspension systems. It is made of galvanized steel

Example identification

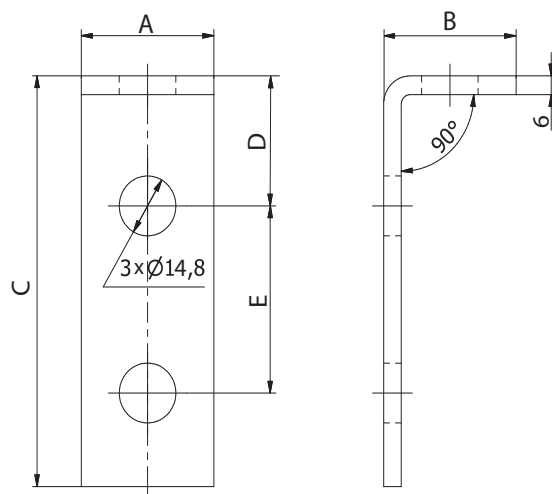
Product code: **LDB-BE-41-2-1**

type _____

For different finishing, add HDG or SS with the item #.

i.e: 10077 HDG, Hot Dipped Galvanized
10077 SS, Stainless Steel

Dimensions



type	A [mm]	B [mm]	C [mm]	D [mm]	E [mm]	numb. of holes vert. horiz.		Item #
LDB-BE-1-1-	40	50	47	20,5	-	1	1	10177
LDB-BE-1-1-R	40	56	41	20,5	-	1	1	10178
LDB-BE-41-2-1	40	56	89	20,5	48	2	1	10179
LDB-BE-41-2-2	40	85	102	33,5	42	2	2	10180
LDB-BE-41-1-3	40	55	131	28,5	41	1	3	10181

Flat couplings type L

LDB-BTRA-41-3



Description

LDB-BTRA coupling is a mandatory component of professional LDB-BTRA profile suspension systems. It is made of galvanized steel.

Example identification

Product code: **LDB-BTRA-41-3**

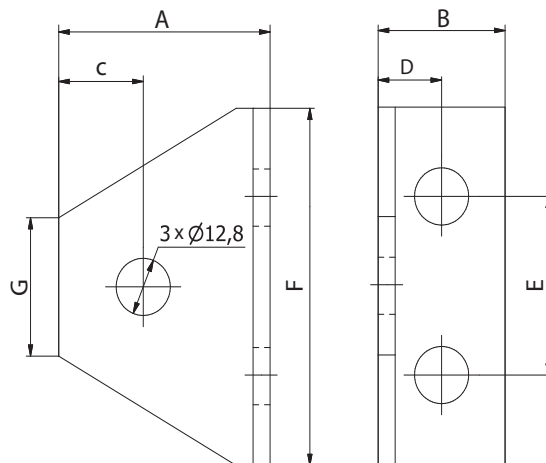
type _____

For different finishing, add HDG or SS with the item #.

i.e: 10077 HDG, Hot Dipped Galvanized
10077 SS, Stainless Steel

Dimensions

LDB-BTRA-41-3 Item # 10182



A [mm]	B [mm]	C [mm]	D [mm]	E [mm]	F [mm]	G [mm]
56	41	20	41	40	80	41

3D couplings

LDB-PBTR-41-5**Description**

LDB-PBTR coupling is a mandatory component of professional LDB-PBTR profile suspension systems. It is made of galvanized steel.

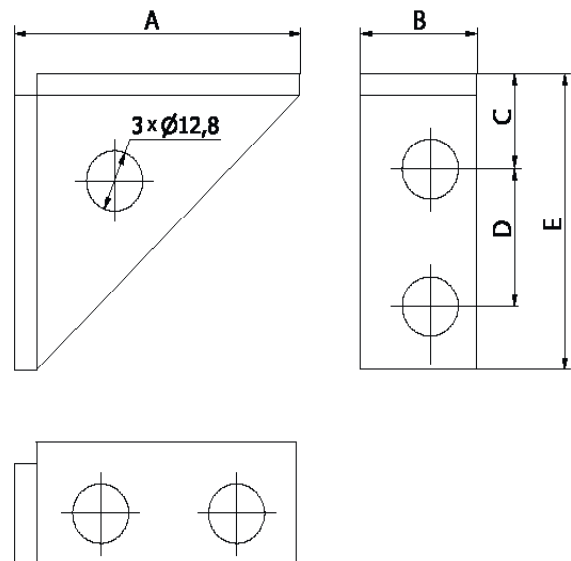
Example identification

Product code: **LDB-PBTR-41-5**

type _____

For different finishing, add HDG or SS with the item #.

i.e: 10077 HDG, Hot Dipped Galvanized
10077 SS, Stainless Steel

Dimensions

type	A [mm]	B [mm]	C [mm]	D [mm]	E [mm]	Item #
LDB-PBTR-41-5	107	48	37	48	107	10183

3D couplings

LDB-AN-TL-41-4



Description

LDB-AN-TL coupling is a mandatory component of professional LDBST profile suspension systems. It is made of galvanized steel.

Example identification

Product code: **LDB-AN-TL-41-4**

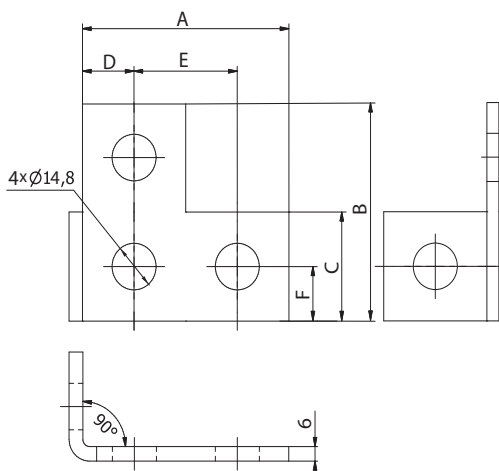
type _____

For different finishing, add HDG or SS with the item #.

i.e: 10077 HDG, Hot Dipped Galvanized
10077 SS, Stainless Steel

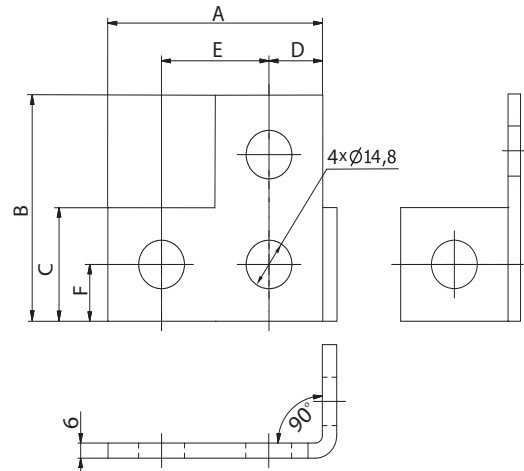
Dimensions

LDB-AN-TL-41-4 item # 10184



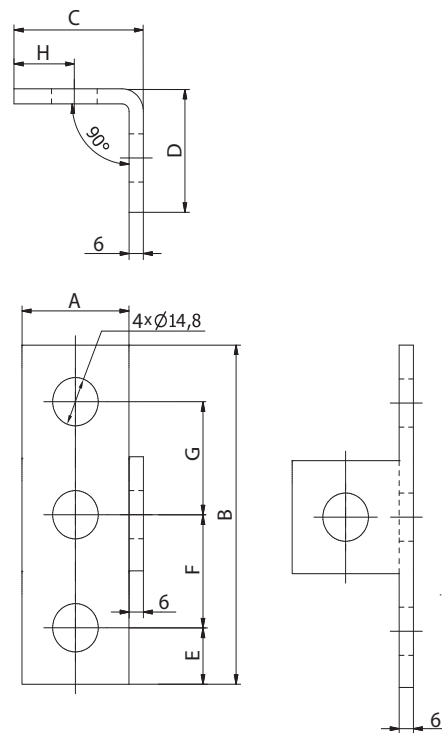
A [mm]	B [mm]	C [mm]	D [mm]	E [mm]	F [mm]
89	89	41	21	47	41

LDB-AN-TR-41-4 Item # 10185

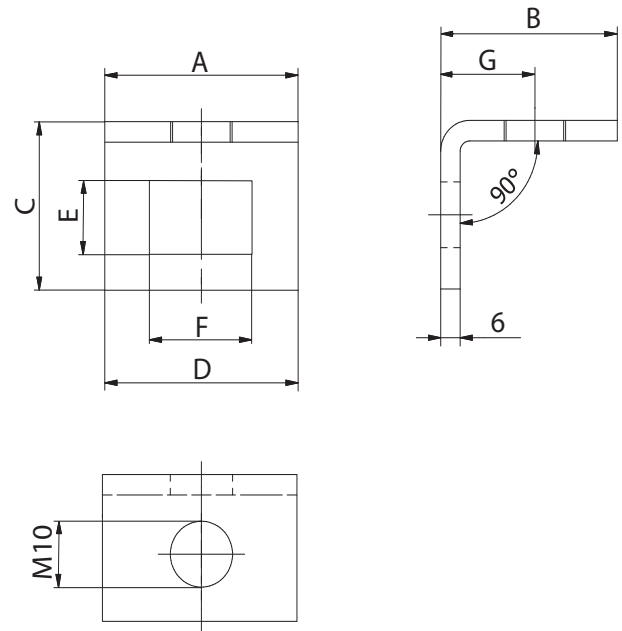


A [mm]	B [mm]	C [mm]	D [mm]	E [mm]	F [mm]
89	89	40	21	47	21

LDB-AN-T-41-4 Item # 10186



A [mm]	B [mm]	C [mm]	D [mm]	E [mm]	F [mm]	G [mm]
41	136	51	47	21	47	47

LDB-B-O-CLAMP-21**Dimensions****Description**

LDB-B-O-CLAMP clamping is a mandatory component of professional LDBST profile suspension systems. It is made of galvanized steel.

Example identification

Product code: **LDB-B-O-CLAMP-21**

type _____

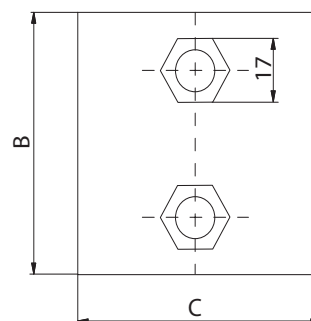
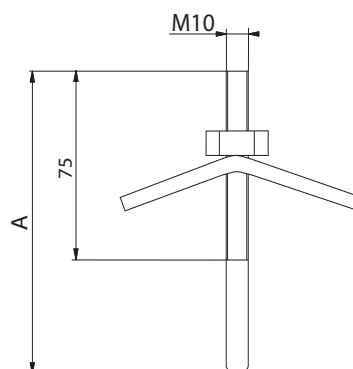
type	A [mm]	B [mm]	C [mm]	D [mm]	E [mm]	F [mm]	G [mm]	Item #
LDB-B-O-CLAMP-21	80	47	70	80	22	43	28	10187
LDB-B-O-CLAMP-41	80	47	90	80	43	43	28	10188
LDB-B-O-CLAMP-82	80	47	131	80	84	43	28	10189

Typ	Average power destructive [kN]
LDB-B-O-CLAMP-21	18,5
LDB-B-O-CLAMP-41	27,0
LDB-B-O-CLAMP-82	23,0

LDB-U-BCLAMP



Dimensions



Description

LDB-U-BCLAMP clamping is a mandatory component of professional LDBST profile suspension systems. It is made of galvanized steel.

Example identification

Product code: **LDB-U-BCLAMP**

type _____

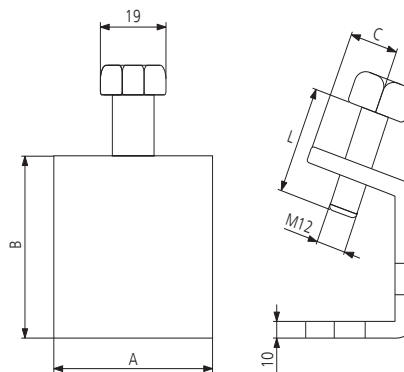
type	A [mm]	B [mm]	C [mm]	Item #
LDB-U-BCLAMP	135	75	61	10190

Typ	Average power destructive [kN]
LDB-U-BCLAMP	13,0

LDB-B-CLAMP



Dimensions



Description

LDB-W-BCLAMP clamping is a mandatory component of professional LDBST profile suspension systems. It is made of galvanized steel.

Example identification

Product code: **LDB-W-BCLAMP**

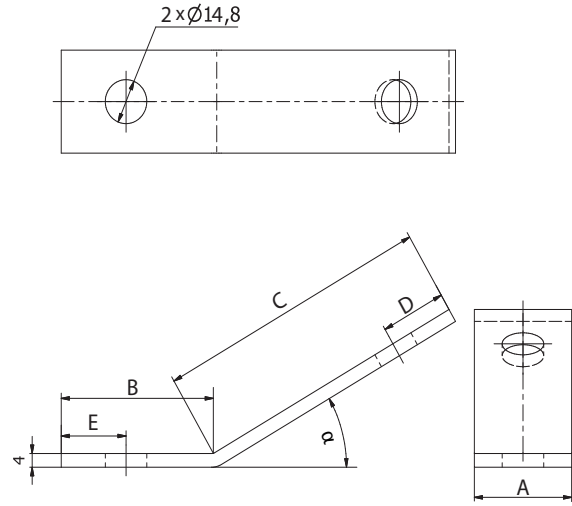
type _____

type	A [mm]	B [mm]	C [mm]	L [mm]	Item #
LDB-B-CLAMP	40	92	18	40	10191
LDB-W-BCLAMP-10	30	50	15	50	10192

LDB-BAN-41



Dimensions



Description

LDB-BAN flat coupling is a mandatory component of professional LDBST profile suspension systems. It is made of galvanized steel.

Example identification

Product code: **LDB-BAN-41-45-2**

type _____

For different finishing, add HDG or SS with the item #.

i.e: 10077 HDG, Hot Dipped Galvanized
10077 SS, Stainless Steel

type	A [mm]	B [mm]	C [mm]	D [mm]	E [mm]	α [°]	Item #
LDB-BAN-41-30-2	40	52	97	21	21	30	10193
LDB-BAN-41-45-2	40	52	97	21	21	45	10194
LDB-BAN-41-45-4	40			21	21	45	10195
LDB-BAN-41-60-2	40	52	97	21	21	60	10196
LDB-BAN-41-120-2	40	69	108	21	21	120	10197
LDB-BAN-41-135-2	40	69	108	21	21	135	10198
LDB-BAN-41-150-2	40	69	108	21	21	150	10199

Z-type couplings

LDB-Z



Description

LDB-Z coupling is a mandatory component of professional LDBST profile suspension systems. It is made of galvanized steel.

Example identification

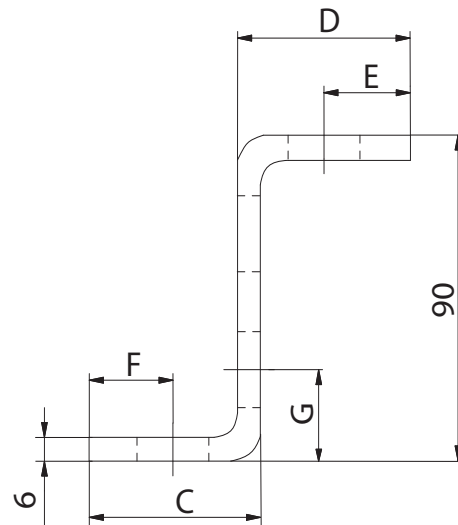
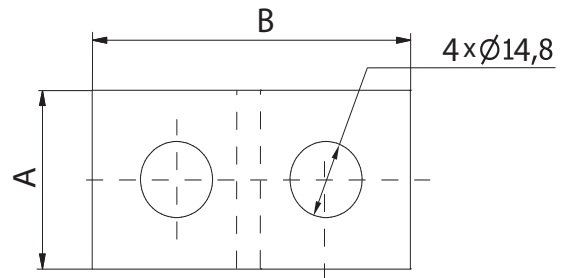
Product code: **LDB-Z-41-2**

type _____

For different finishing, add HDG or SS with the item #.

i.e: 10077 HDG, Hot Dipped Galvanized
10077 SS, Stainless Steel

Dimensions



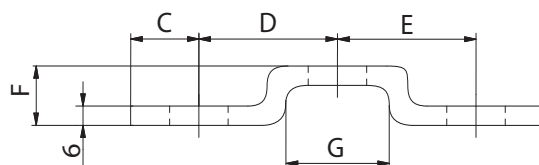
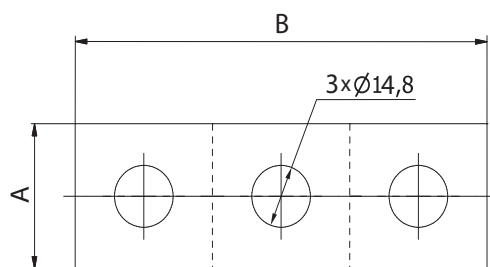
type	A [mm]	B [mm]	C [mm]	D [mm]	E [mm]	F [mm]	G [mm]	Item #
LDB-Z-41-2	40	88	47	47	21	21	-	10200
LDB-Z-41-3	40	88	47	47	21	21	27	10201
LDB-Z-82-4	80	88	47	47	21	21	27	10202

U-type coupling

LDB-U



Dimensions



Description

LDB-U coupling is a mandatory component of professional LDBST profile suspension systems. It is made of galvanized steel.

Example identification

Product code: **LDB-U-21-3**

type _____

For different finishing, add HDG or SS with the item #.

i.e: 10077 HDG, Hot Dipped Galvanized
10077 SS, Stainless Steel

type	A [mm]	B [mm]	C [mm]	D [mm]	E [mm]	F [mm]	holes [pcs.]	Item #
LDB-U-21-3	40	134	20	47	47	28	3	10203
LDB-U-41-3	40	134	47	47	47	50	3	10204
LDB-U-82-3	40	134	47	47	47	87	3	10205
LDB-U-41-6	40	177	20	47	47	50	6	10206

U-type coupling

LDB-DCB-41-4



Description

LDB-DCB coupling is a mandatory component of professional LDBST profile suspension systems. It is made of galvanized steel.

Example identification

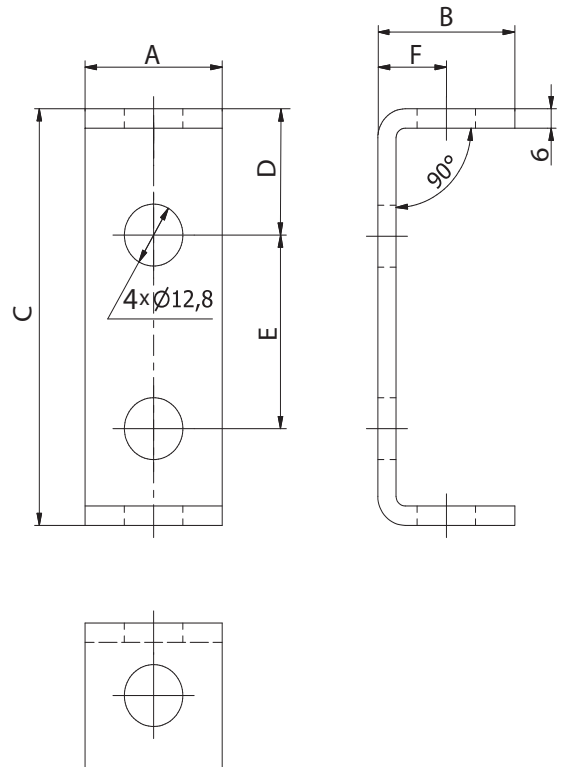
Product code: **LDB-DCB-41-4**

type _____

For different finishing, add HDG or SS with the item #.

i.e: 10077 HDG, Hot Dipped Galvanized
10077 SS, Stainless Steel

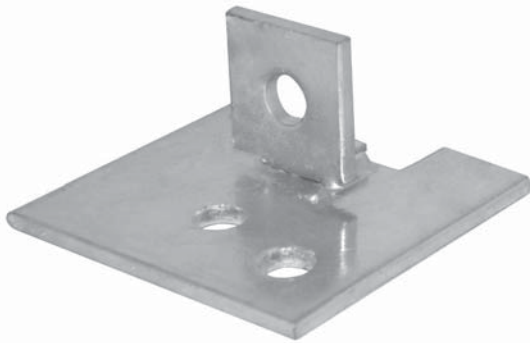
Dimensions



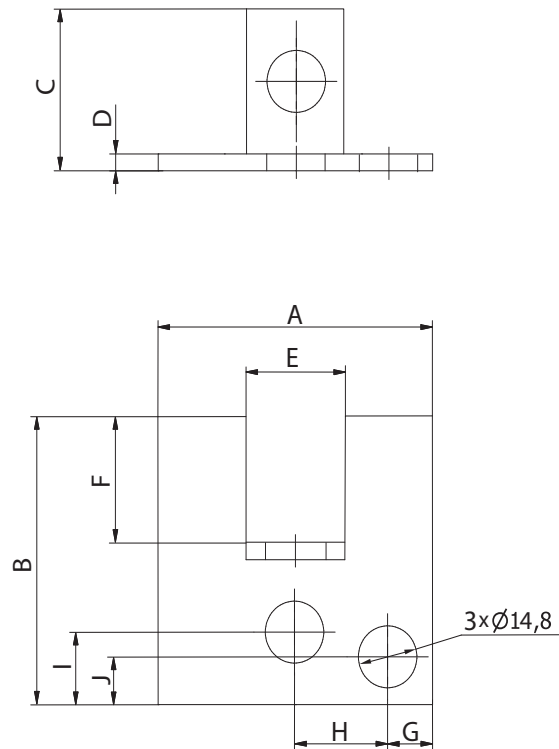
type	A [mm]	B [mm]	C [mm]	D [mm]	E [mm]	F [mm]	Item #
LCB-DCB-41-4	40	48	98	27	40	27	10207

Feet for LDBST profiles

LDB-STP-AN-41-3



Dimensions



Description

LDB-STP foot is used as a base for mounting a LDBST profile. The outer dimensions are compatible with the LDBST profile.

Example identification

Product code: **LDB-STP-AN-41-3**

type _____

For different finishing, add HDG or SS with the item #.

i.e: 10077 HDG, Hot Dipped Galvanized
10077 SS, Stainless Steel

A	B	C	D	E	F	G	H	I	Item #
[mm]	[mm]	[mm]	[mm]	[mm]	[mm]	[mm]	[mm]	[mm]	
101	101	21	6	45	21	21	51	30	10208

Feet for LDBST profiles

LDB-PFIX-41-4-TOP**Description**

LDB-STP foot is used as a base for mounting a LDBST profile. The outer dimensions are compatible with the LDBST profile.

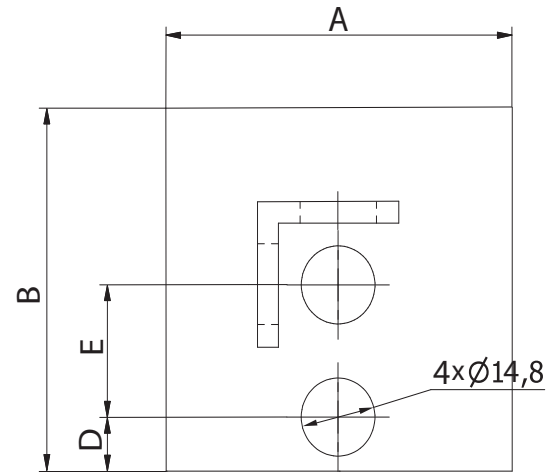
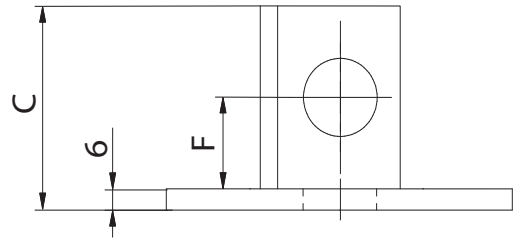
Example identification

Product code: **LDB-PFIX-41-4-TOP**

type _____

For different finishing, add HDG or SS with the item #.

i.e: 10077 HDG, Hot Dipped Galvanized
10077 SS, Stainless Steel

Dimensions

type	A [mm]	B [mm]	C [mm]	D [mm]	E [mm]	F [mm]	Item #
LDB-PFIX-41-4-TOP	100	100	46	21	30	20	10209

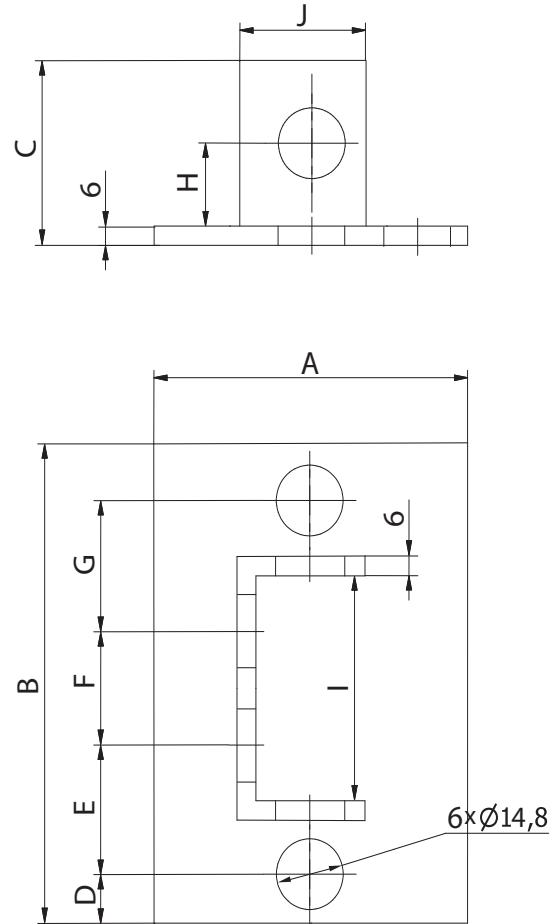
Feet for LDBST profiles

LDB-STP-82-6-2



Dimensions

LDB-STP-82-6-2 Item # 10210



Description

LDB-STP foot is used as a base for mounting a LDBST profile. The outer dimensions are compatible with the LDBST profile.

Example identification

Product code: **LDB-STP-82-6-2**

type _____

For different finishing, add HDG or SS with the item #.

i.e: 10077 HDG, Hot Dipped Galvanized
10077 SS, Stainless Steel

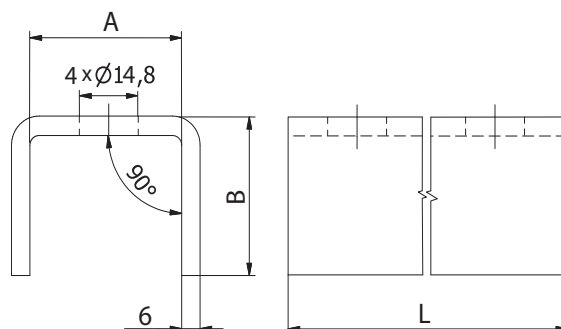
A	B	C	D	E	F	G	H	I	J
[mm]	[mm]	[mm]	[mm]	[mm]	[mm]	[mm]	[mm]	[mm]	[mm]
100	200	46	20	60	40	60	26	83	48

U-type coupling

LDB-EXT-U-21-4



Dimensions



Description

LDB-EXT-U coupling is a mandatory component of professional LDBST profile suspension systems. It is made of galvanized steel.

Example identification

Product code: **LDB-EXT-U-21-4**

type _____

For different finishing, add HDG or SS with the item #.

i.e: 10077 HDG, Hot Dipped Galvanized
10077 SS, Stainless Steel

type	A [mm]	B [mm]	L [mm]	Item #
LDB-EXT-U-21-4	43	27	184	10212
LDB-EXT-U-41-4	43	47	184	10213

Fastening sleeve joints

LDB-WP-41



Description

LDB-WP sleeve joint is a mandatory component of professional LDBST profile suspension systems. It is made of galvanized steel.

Example identification

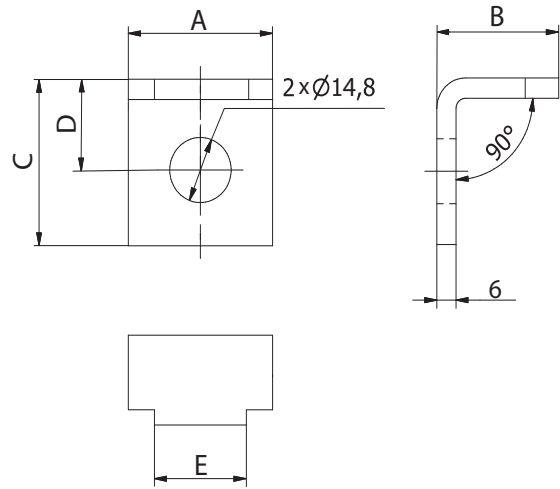
Product code: **LDB-WP-41**

type _____

For different finishing, add HDG or SS with the item #.

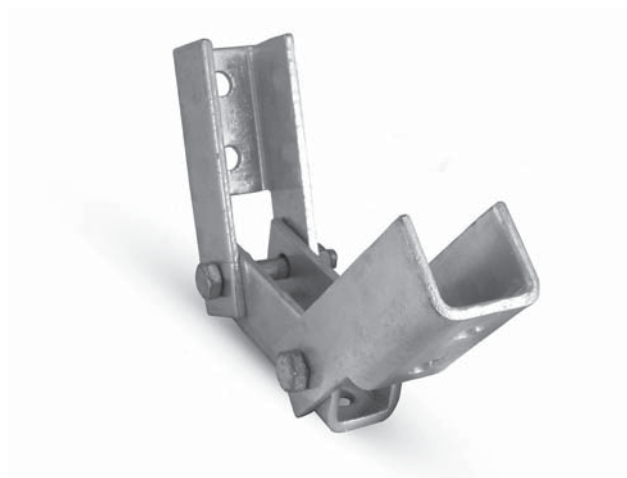
i.e: 10077 HDG, Hot Dipped Galvanized
10077 SS, Stainless Steel

Dimensions



type	A [mm]	B [mm]	C [mm]	D [mm]	E [mm]	Item #
LDB-WP-41	40	29	54	24	20	10214

LDB-BAN-R2-41



Description

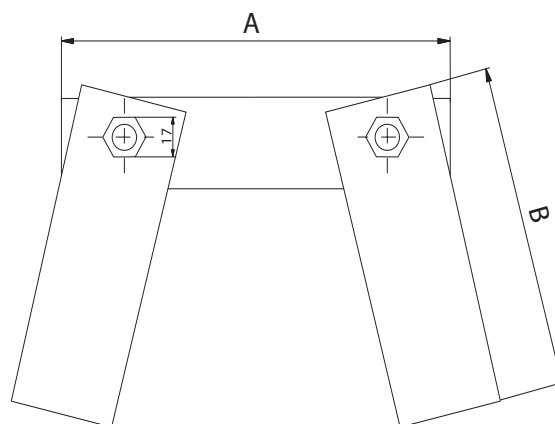
LDB-BAN-R2 coupling is a mandatory component of professional LDBST profile suspension systems. It is made of galvanized steel.

Example identification

Product code: **LDB-BAN-R2-41**

type _____

Dimensions

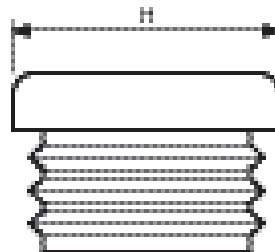


type	A [mm]	B [mm]	Item #
LDB-BAN-R2-41	136	147	10215

Z-LDB



Dimensions



Description

The Z-LDB end cap is made of PVC and is used for terminating LDB profiles.

Example identification

Product code: **Z-LDB-30**

type _____

<i>code</i>	<i>H</i> <i>[mm]</i>	<i>Item #</i>
Z-LDB-20	20	10216
Z-LDB-30	30	10217
Z-LDB-45	45	10218
Z-LDB-21	21	10219
Z-LDB-41	41	10220

Shock Vibration Absorber

GPK



Description

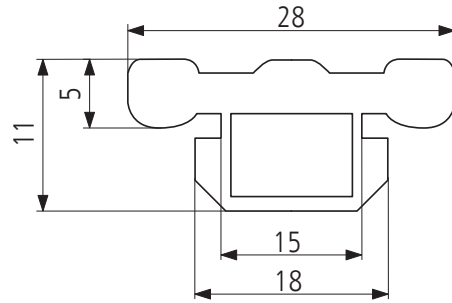
The GPK absorber is used with LDB ducts to attenuate noise caused by vibrations that may occur between the channel and the ventilation duct.

Example identification

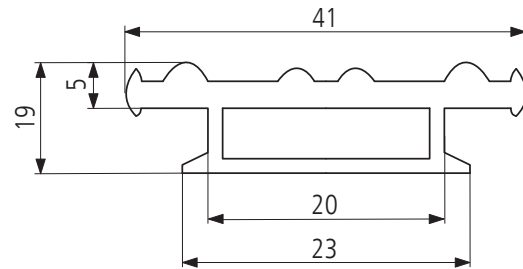
Product code: **GPK**
type _____

Dimensions

GPK Item # 10221



GPK-41



Duct Nut

SNP/SNL/SNKL



Description

The SNP duct nut without spring makes it easier to attach the PG threaded rod LDB-ST profile. The SNL version is provided with a spring that eliminates the vibrations of the nut and makes its mounting easier.

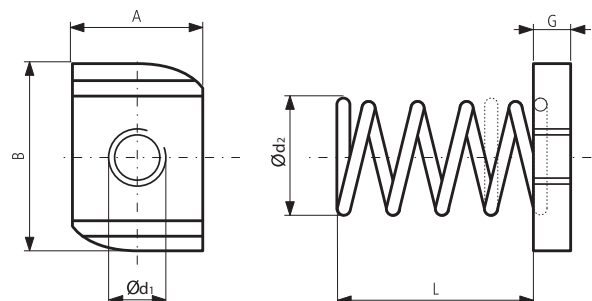
Example identification

Product code: **SNP0806**

type _____

Type	Torque installation [Nm]
SNP-0606	19,6
SNP-0806	20,6
SNP-1008	35,7
SNP-1212	51,0
SNL-0606	19,6
SNL-0806	20,6
SNL-1008	35,7
SNL-1212	51,0
SNKL-0606	19,6
SNKL-0806	20,6
SNKL-1008	35,7
SNKL-1212	51,0

Dimensions



code	Ød ₁ [mm]	Ød ₂ [mm]	A [mm]	B [mm]	G [mm]	L [mm]	Item #
SNP-0606	6	-	20	35	6	-	10222
SNP-0806	8	-	20	35	6	-	10223
SNP-0806-SR-NK	8	-			6	-	10224
SNP-1008	10	-	20	35	8	-	10225
SNP-1008-SR-NK	10	-			8	-	10226
SNP-1212	12	-	20	35	12	-	10227
SNL-0606	6	18	20	35	6	30	10228
SNL-0806	8	18	20	35	6	30	10229
SNL-1008	10	18	20	35	8	30	10230
SNL-1212	12	18	20	35	12	30	10231
SNKL-0606	6	18	20	35	6	15	10232
SNKL-0806	8	18	20	35	6	15	10233
SNKL-1008	10	18	20	35	8	15	10234
SNKL-1212	12	18	20	35	12	15	10235

Threaded Rod

PG



Description

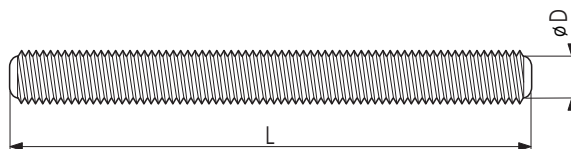
Threaded rod with galvanised surface. It is suitable for the suspension of ventilation and air-conditioning systems.

Example identification

Product code: **PG10-1**

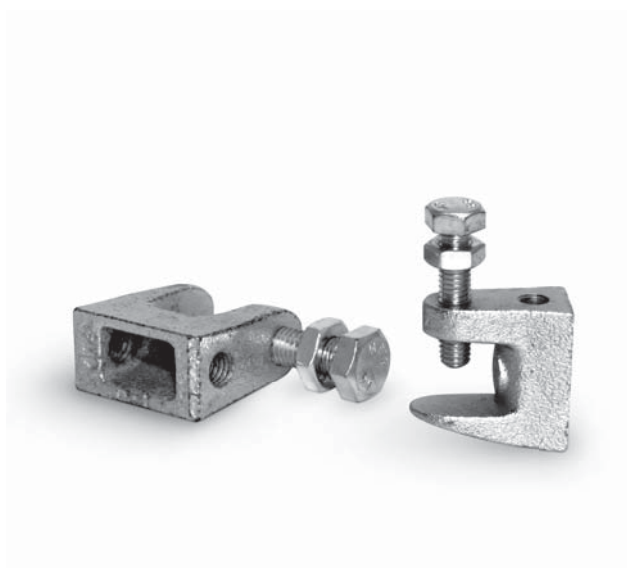
type _____

Dimensions



type	diameter D [mm]	length L [mm]	Item #
PG6-1	M6	1000	10236
PG6-2	M6	2000	10237
PG6-3	M6	3000	10238
PG8-1	M8	1000	10239
PG8-2	M8	2000	10240
PG8-3	M8	3000	10241
PG10-1	M10	1000	10242
PG10-2	M10	2000	10243
PG10-3	M10	3000	10244
PG12-1	M12	1000	10245
PG12-2	M12	2000	10246
PG12-3	M12	3000	10247

Beam Clamp B-CLB



Description

The TKN clamp is designed for the installation of threaded rods used for the suspension of electricity, heat, water and ventilation systems. The clamp is usually attached to steel beams of various shapes using a class 8.

Note: Tighten the bolt by hand until it stops and then 1/2 turn the key. Then tighten the nut.

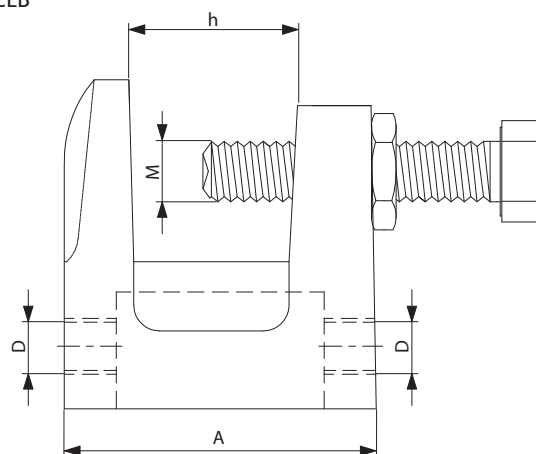
Example identification

Product code: **B-CLB-8**

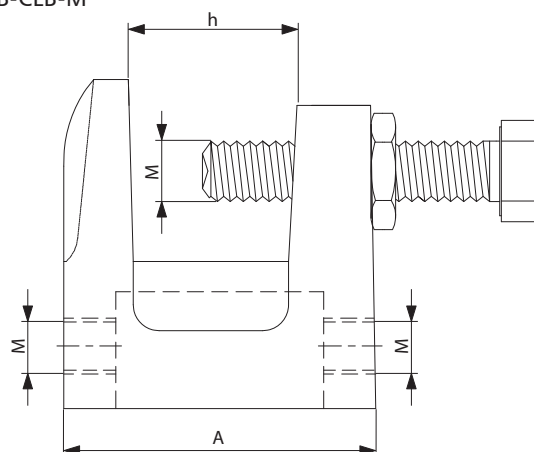
type _____

Dimensions

B-CLB



B-CLB-M



Typ	h [mm]	A [mm]	M [mm]	D [mm]	Item #
B-CLB-7	18	35	M6	7	10248
B-CLB-9	18	35	M8	9	10249
B-CLB-11	25	45	M10	11	10250
B-CLB-13	25	45	M12	13	10251
B-CLB-M6	16	30	M6	-	10252
B-CLB-M8	18	35	M8	-	10253
B-CLB-M10	23	45	M10	-	10254
B-CLB-M12			M12	-	10255

Type	Characteristic load F_k [kN]	Recommended load F_k [kN]	Average destructive load [kN]
M6	2,4	1,2	8,5
M8	4,0	2,0	19,5
M10	4,6	2,3	20,5

Steel nuts

SRS/SRS-D



Description

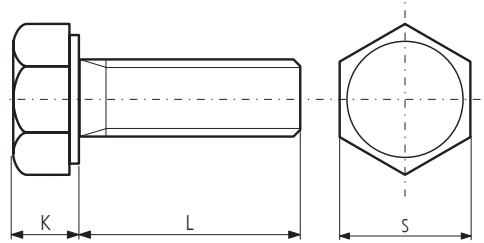
SRS steel screws are used for fastening additional components to ventilation ducts and joining rectangular duct corners together.

Example identification

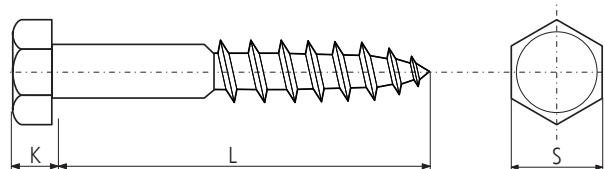
Product code: **SRS - M8**

type _____
 diameter _____

Dimensions



code	size	L [mm]	K [mm]	S [mm]	weight [kg/100]	Item #
SRS-M6	M	25	5	10	0,66	10263
SRS-M8	M	25	5	13	1,39	10264
SRS-M10	M	25	5	17	2,57	10265
SRS-M12	M	25	5	19	3,66	10266



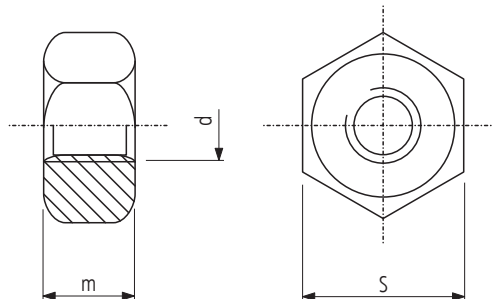
code	size	L [mm]	K [mm]	S [mm]	Item #
SRS-D6-50	M	50	4	10	10267
SRS-D6-70	M	70	4	10	10268
SRS-D8-50	M	50	5,5	13	10269
SRS-D8-65	M	65	5,5	13	10270
SRS-D8-70	M	70	5,5	13	10271
SRS-D10-50	M	50	7	17	10272
SRS-D10-65	M	65	7	17	10273
SRS-D10-70	M	70	7	17	10274
SRS-D10-100	M	100	7	17	10275

Steel Nuts

NKS



Dimensions



Description

Together with SRS screws, the NKS steel nut is used for the installation of ventilation system components.

Example identification

Product code: **NKS - M8**

type _____
 diameter _____

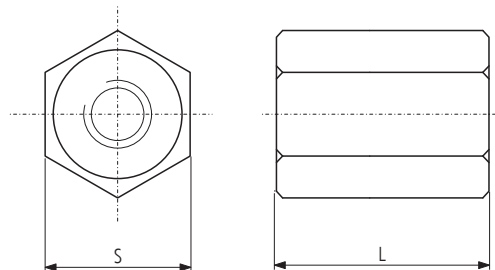
code	d [mm]	class	S [mm]	weight [kg/100]	Item #
NKS-M6	6	5	10	0,25	10304
NKS-M8	8	5	13	0,52	10305
NKS-M10	10	5	17	1,16	10306
NKS-M12	12	5	19	1,73	10307

Galvanised steel joining nut

NZO



Dimensions



Description

The NZO steel joining nut is designed for connecting two PG threaded rods together.

Example identification

Product code: NZO - M8

type _____
diameter _____

code	size	S [mm]	L [mm]	weight [kg/100]	Item #
NZO-M6	M	10	24	0,11	10308
NZO-M8	M	13	24	0,21	10309
NZO-M10	M	17	30	0,35	10310
NZO-M12	M	19	40	0,58	10311



Description

Together with the SRS crew and the NKS nut, the PSD steel washer is used for the installation of rectangular ducts.

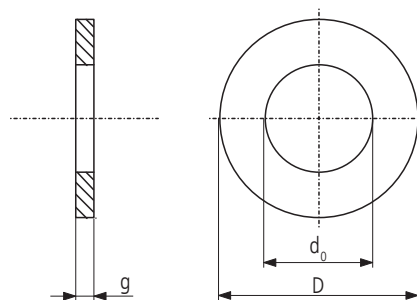
Example identification

Product code: **PDS - 8**

type _____

diameter _____

Dimensions



Standard Steel Washer PDS, according to DIN 125

code	d_0 [mm]	D [mm]	g [mm]	weight [kg/100]	Item #
PDS-6	6,4	12	1,6	0,10	10312
PDS-8	8,4	16	1,6	0,18	10313
PDS-10	10,5	20	2,0	0,37	10314
PDS-12	13,0	24	2,5	0,50	10315

Steel Washer PDS-P, according to DIN 9021

code	d_0 [mm]	D [mm]	g [mm]	weight [kg/100]	Item #
PDS-P-8	8,4	24	2,0	0,62	10316
PDS-P-10	10,5	30	2,5	1,22	10317
PDS-P-12	13,0	37	3,0	2,22	10318

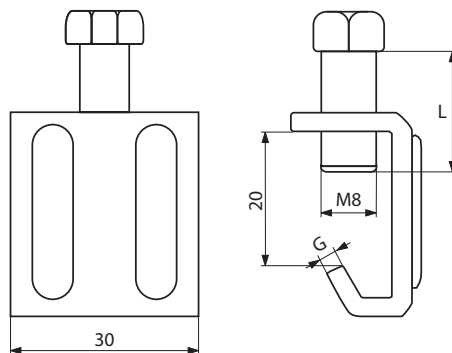
Steel Washer PDS-K, according to DIN 6798

code	d_0 [mm]	D [mm]	g [mm]	weight [kg/100]	Item #
PDS-K-8	8,4	15	0,7	0,07	10319
PDS-K-10	10,5	18	0,9	0,12	10320
PDS-K-12	13,0	20	1,0	0,14	10321

G-Clamp KLQ



Dimensions



Description

The KLQ clamp is used to protect rectangular duct connections with joining profile end cover.

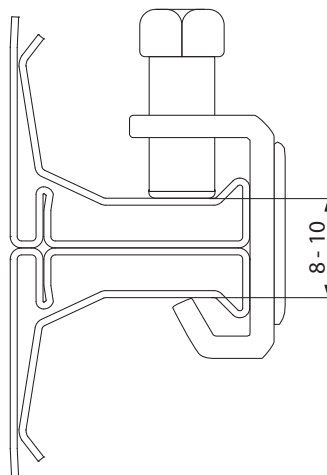
Example identification

Product code: **KLQ-20**

type _____

type	screw [mm]	L [mm]	G [mm]	Item #
KLQ-20	M8	25	3,0	10322
KLQ-20-2,5	M8	20	2,5	10323

Connection method



Mounting roof feet

ST-ROF-330/ST-ROF-AW-330**Description**

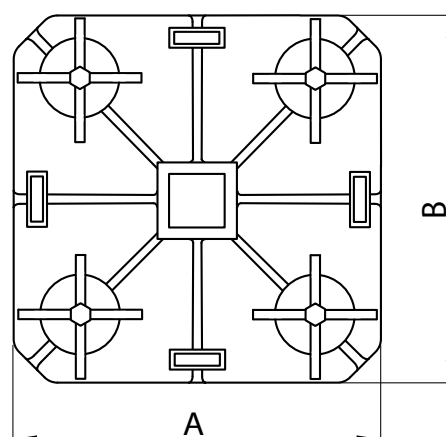
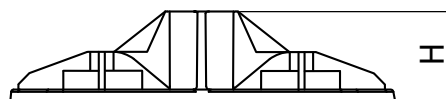
Interest Roof ST-ROF and ST-ROF-AW is designed for the foundation of various types of industrial equipment such as condensers, control, air conditioning, solar panels. Together with profiles LDBST 41-41 provide a framework and stands for duct installation and construction of all types of bridges, passages and structures on the roofs. With mounted two levels with the installer has the ability to control the exact rate settings. Each foot roof is made of a material resistant to moisture and UV rays.

ST-ROF - the same rate without legs and anti-vibration mat (mat ST-ROF-MAT - separate index to be ordered separately)
 ST-ROF-AW - the rate of anti-vibration feet, adjustable tilt up to 10 ° roof

Material: fiberglass-reinforced polypropylene (PP)
Maximum load: 2200N

Marking exampleProduct code: **ST-ROF - 330**

type
 AxA

**Dimensions**

code	A [mm]	B [mm]	H [mm]	Weight [kg]	Item #
ST-ROF-330	300	300	75	1,17	10408
ST-ROF-AW-330	300	300	75	1,55	10409

Mounting roof feet

ST-ROF-AWL



Description

ST-ROF-AWL roof feet are intended to support lighter devices, e.g. home air-conditioners, piping bundles, ducts or cables. ST-ROF-AWL roof feet are available in six different lengths.

Material: SBR butadiene styrene rubber, resistant to moisture

Maximum load: 1400N

Thermal resistance: from -40°C to +80°C

Marking example

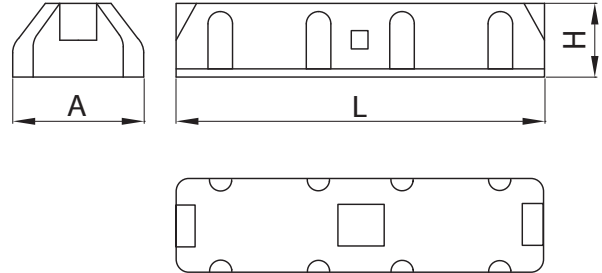
Product code: **ST-ROF-AWL - 450**

type
L

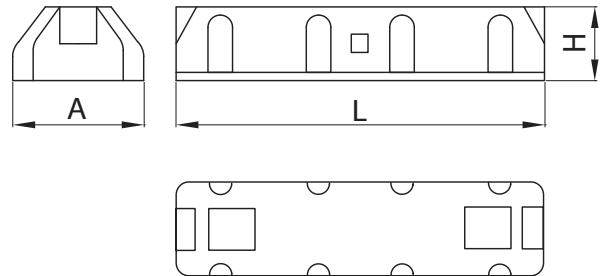


Dimensions

ST-ROF-AWL-250, ST-ROF-AWL-450

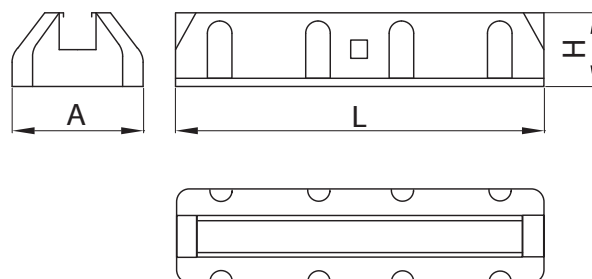


ST-ROF-AWL-600, ST-ROF-AWL-1000



type	A [mm]	L [mm]	H [mm]	weight [kg]	Item #
ST-ROF-AWL-250	160	250	90	0,48	10410
ST-ROF-AWL-450	160	450	90	1,75	10411
ST-ROF-AWL-600	160	600	90	3,1	10412
ST-ROF-AWL-1000	160	1000	90	10,2	10413

Mounting roof feet

ST-ROF-AWL-STR**Dimensions****Description**

ST-ROF-AWL-STR roof feet are intended to support lighter devices, e.g. home air-conditioners, piping bundles, ducts or cables.

ST-ROF-AWL-STR roof feet are available in six different lengths. The ST-ROF-AWL-STR roof foot is fitted with a 41x41mm aluminum mounting rail that runs along its length.

Material: SBR butadiene styrene rubber, resistant to moisture

Maximum load: 1400N

Thermal resistance: from -40°C to +80°C

Marking example

Product code: **ST-ROF-AWL-STR - 450**

type

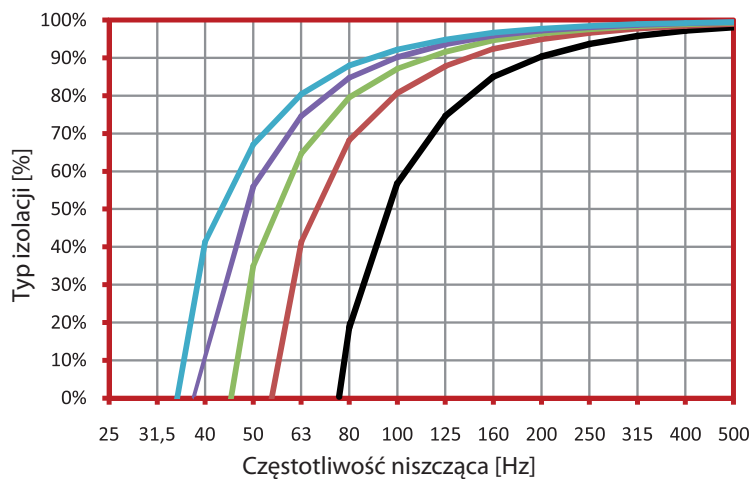
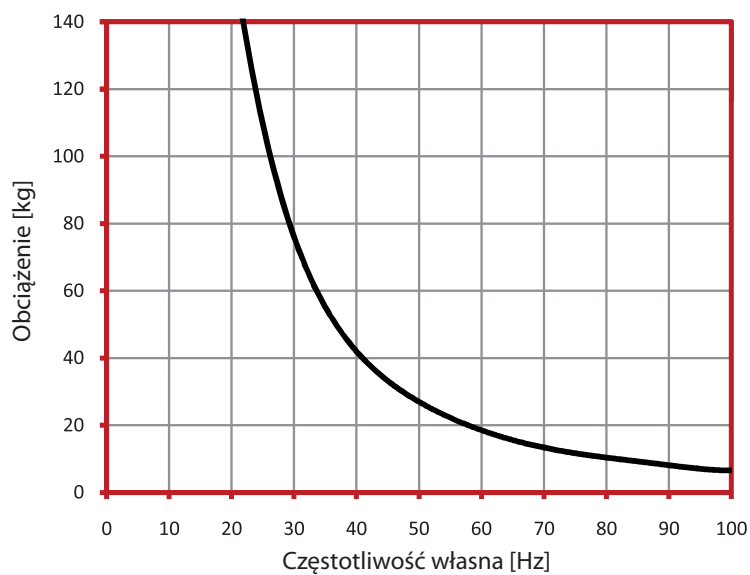
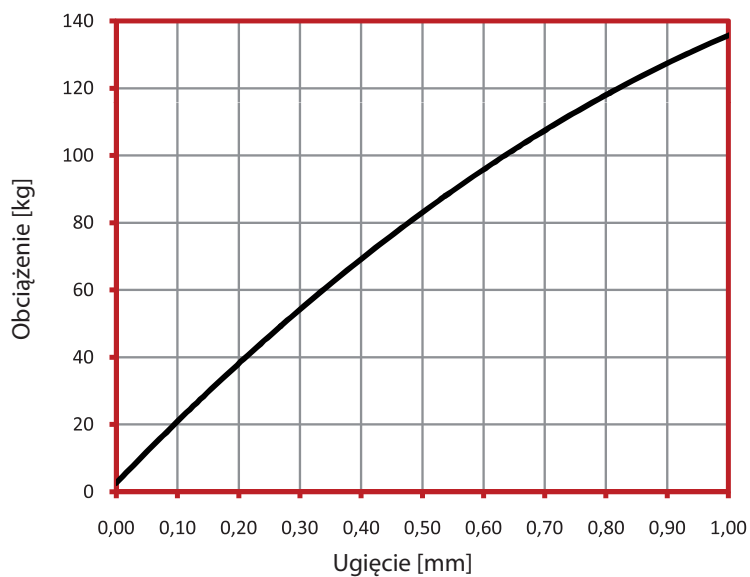
L



type	A [mm]	L [mm]	H [mm]	weight [kg]	Item #
ST-ROF-AWL-STR-250	160	250	90	0,48	10414
ST-ROF-AWL-STR-450	160	450	90	1,75	10415
ST-ROF-AWL-STR-600	160	600	90	3,1	10416
ST-ROF-AWL-STR-1000	160	1000	90	10,2	10417

ST-ROF-AWL/ST-ROF-AWL-STR

Technical data



Load [kg]	Natural frequency [Hz]	Insulation type [%]
25	52,0	56,8
50	36,7	80,7
75	30,2	87,1
100	26,2	90,2
125	23,3	92,2

Vibration dampening mats

ST-ROF-MAT



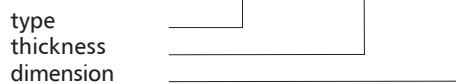
Description

Vibration dampening mats ST-ROF-MAT are used as a base for mounting roof feet and equipment. They effectively dampen noise and vibrations. They also protect the surface underneath from mechanical damage.

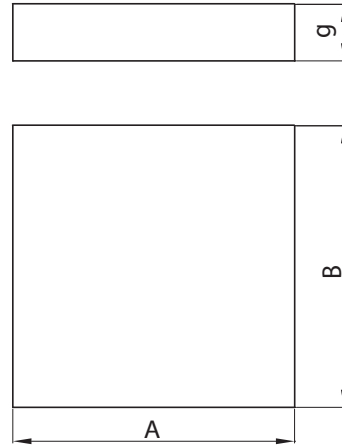
Material: SBR butadiene styrene rubber, resistant to moisture
Density: 500kg/m³

Marking example

Product code: **ST-ROF-MAT - 2 - 50**



Dimensions



code	A [mm]	B [mm]	g [mm]	Item #
ST-ROF-MAT-1-33	330	330	10	10418
ST-ROF-MAT-1-50	500	500	10	10419
ST-ROF-MAT-1-100	1000	1000	10	10420
ST-ROF-MAT-2-50	500	500	20	10421
ST-ROF-MAT-2-100	1000	1000	20	10422

Suspensions Rings for Heavy Duty

CLRL-C



Description

Suspension ring CLRL-C is used for round duct from 16 to 252 of diameters. At insulated duct it is recommended that the suspension ring is mounted inside the insulation.

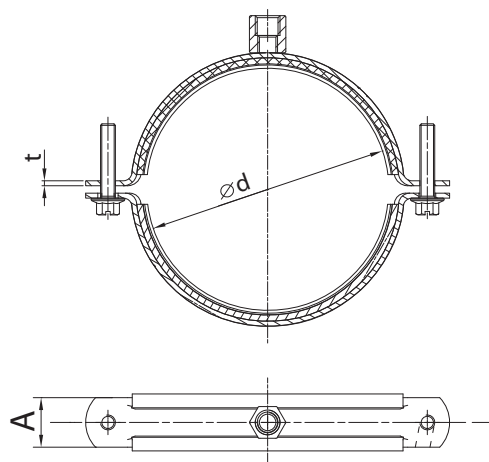
Example identification

Product code: **CLRL-C - 3/8**

type
Ød



Dimensions



for $16 \leq \text{Ød} \leq 63$ rivetnut M8
for $75 \leq \text{Ød} \leq 168$ rivetnut M8, M10
for $198 \leq \text{Ød} \leq 252$ rivetnut M10

code	Ød [cale]	Diameters range [mm]	A [mm]	t [mm]	Weight [kg]	Item#
CLRL-C-3/8	3/8"	16-20	20	1,5	0,052	10001
CLRL-C-1/2	1/2"	20-24	20	1,5	0,059	10002
CLRL-C-3/4	3/4"	25-30	20	1,5	0,069	10003
CLRL-C-1	1"	32-37	20	1,5	0,072	10004
CLRL-C-1 1/4	1 1/4"	40-45	20	1,5	0,087	10005
CLRL-C-1 1/2	1 1/2"	48-53	20	1,5	0,097	10006
CLRL-C-2	2"	59-63	20	1,5	0,104	10007
CLRL-C-2 1/2	2 1/2"	75-80	25	2,0	0,198	10008
CLRL-C-3	3"	85-92	25	2,0	0,226	10009
CLRL-C-3 1/2	3 1/2"	95-103	25	2,0	0,245	10010
CLRL-C-4	4"	108-116	25	2,0	0,252	10011
CLRL-C-5	5"	135-141	25	2,0	0,334	10012
CLRL-C-6	6"	169-168	25	2,0	0,4	10013
CLRL-C-200	-	198-202	30	3,0	0,723	10014
CLRL-C-8	8"	206-215	30	3,0	1,12	10015
CLRL-C-10	10"	248-252	30	3,0	1,275	10016

CLRU



Description

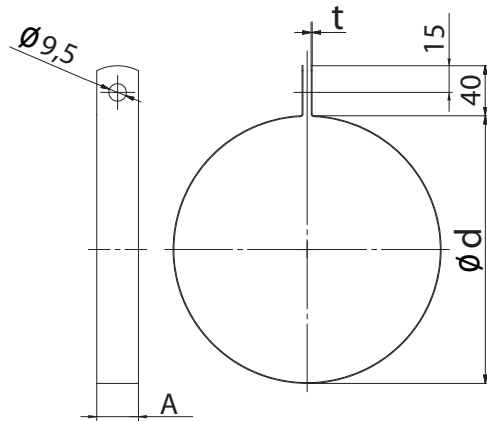
Suspension ring for round duct. At insulated duct it is recommended that the suspension ring is mounted inside the insulation.

Example identification

Product code: **CLRU - 160 - 1,2**

type	_____
∅d	_____
thickness t	_____

Dimensions



∅d	A [mm]	t [mm]	A [mm]	t [mm]	Item#
80	25	2,0	30	1,2	10017
100	25	2,0	30	1,2	10018
125	25	2,0	30	1,2	10019
140	25	2,0	30	1,2	10020
150	25	2,0	30	1,2	10021
160	25	2,0	30	1,2	10022
180	25	2,0	30	1,2	10023
200	25	2,0	30	1,2	10024
224	25	2,0	30	1,2	10025
250	25	2,0	30	1,2	10026
280	25	2,0	30	1,2	10027
300	25	2,0	30	1,2	10028
315	25	2,0	30	1,2	10029
355	25	2,0	30	1,2	10030
400	25	2,0	30	1,2	10031
450	25	2,0	30	1,2	10032
500	25	2,0	30	1,2	10033
560	25	2,0	30	1,2	10034
600	25	2,0	30	1,2	10035
630	25	2,0	30	1,2	10036
710	25	2,0	30	1,2	10037
800	25	2,0	30	1,2	10038

Suspension Rings CLR/CLRL



Description

CLR - Suspension ring for round ducts. Consisting of two parts that are assembled with screws, with a quick release system on one side.

CLRL - Suspension ring with vibration-damping EPDM rubber.

Example identification

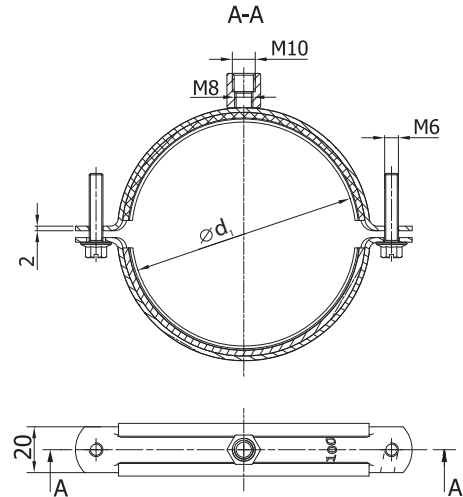
Product code: **CLRL** - **aaa**

type _____
 \varnothing D _____

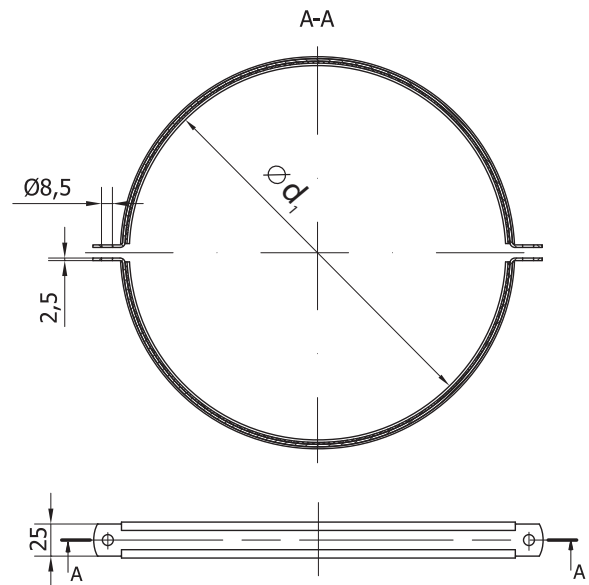
\varnothing D rated [mm]	weight [kg]	\varnothing D rated [mm]	weight [kg]	Item #
80	0,2	400	0,5	10039
100	0,2	450	0,6	10040
112	0,2	500	0,6	10041
125	0,2	560	0,7	10042
140	0,2	600	0,7	10043
150	0,2	630	0,8	10044
160	0,2	710	0,9	10045
180	0,3	800	1,1	10046
200	0,3	900	1,2	10047
224	0,3	1000	1,3	10048
250	0,3	1120	1,5	10049
280	0,3	1250	1,6	10050
300	0,4	1400	1,9	10051
315	0,4	1500	2,0	10052
355	0,5	1600	2,2	10053

Dimensions

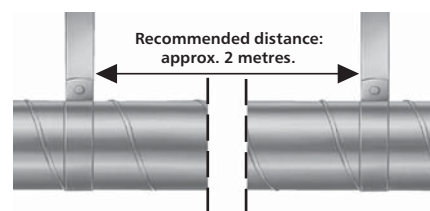
For diameters $d_1 \leq 400$ mm



For diameters $d_1 \geq 450$ mm



* The rings with diameters from $d_1 \geq 450$ mm on are supplied without combined nuts and are hung up two threaded rods



FAA/FAAL/FAAT

FAA



FAAL



FAAT



Description

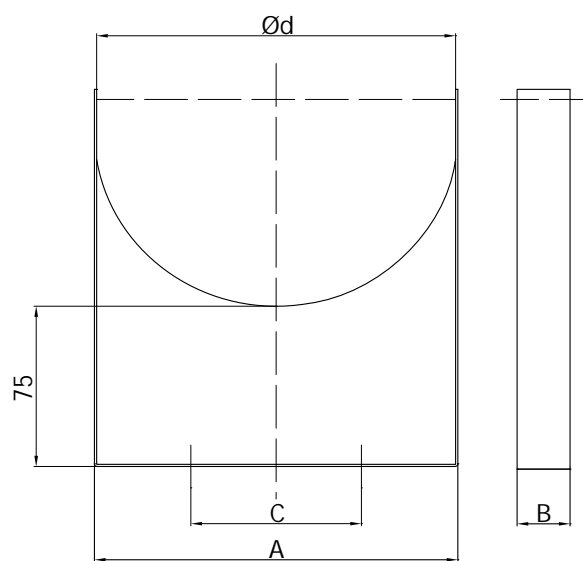
Duct supports for round duct

Example identification

Product code: **FAA - 160**

type _____
 Ød _____

Dimensions



Ød [mm]	A [mm]	B [mm]	C [mm]	holes number	Item #
80	83	25	-	1	10058
100	103	25	33	2	10059
125	128	25	58	2	10060
150	153	25	83	2	10061
160	163	25	93	2	10062
200	203	25	133	2	10063
250	253	25	183	2	10064
315	318	25	248	2	10065
400	403	25	333	2	10066
500	503	25	433	2	10067
630	633	30	563	2	10068



Description

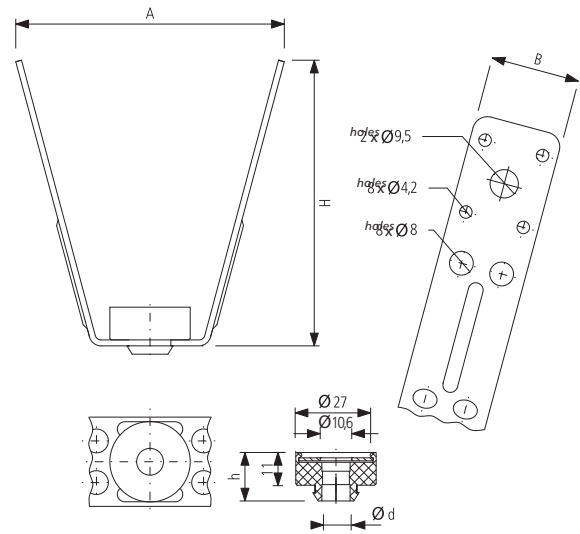
Suitable for reliable and easy assembly of all types of duct systems. With the V-type trapezium suspension you can suspend various components from a trapezium sheet metal roof structure using self-tapping screws. Thickness: 1,9 mm.

Example identification

Product code: EQVS

type _____

Dimensions



A [mm]	B [mm]	H [mm]	h [mm]	Ød [mm]
84	30	95	18,9	10

Typ	Characteristic load F_k [kN]	Recommended load F_r [kN]	Item #
EQVS	1,0	0,5	10069

EQRS



Description

The type R bracket is used for the suspension of round ducts. The bracket is then fitted onto the duct surface using self-tapping screws. Thickness: 2,0 mm.

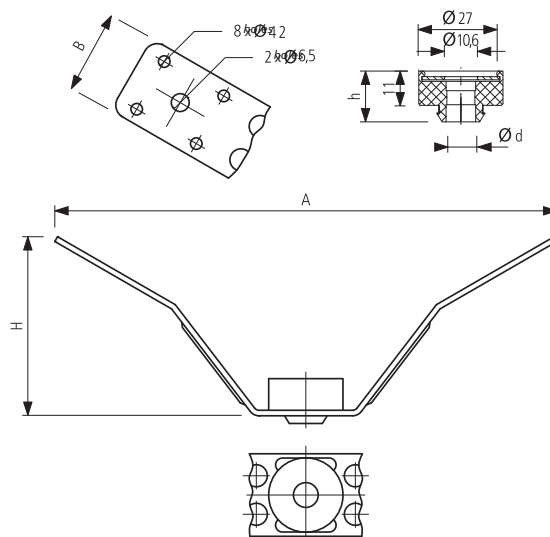
Example identification

Product code:

EQRS

type _____

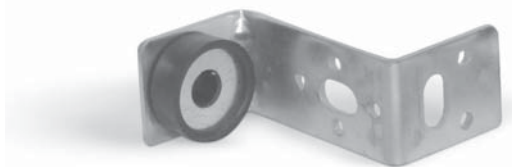
Dimensions



A [mm]	B [mm]	H [mm]	h [mm]	Ød [mm]	Item #
182,5	30	65	16,3	9	10070

Rectangular duct brackets

EQZS



Description

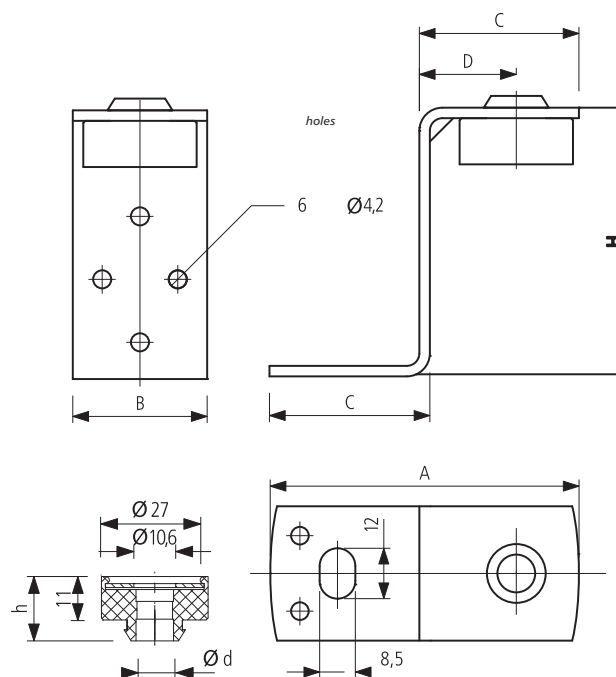
Suitable for quick installation of rectangular ventilation ducts, especially using threaded rods and self-tapping screws. Thickness: 2,3 mm.

Example identification

Product code: **EQZS**

type _____

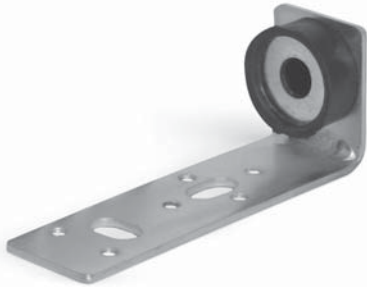
Dimensions



A	B	C	D	H	h	Ød
[mm]	[mm]	[mm]	[mm]	[mm]	[mm]	[mm]
73,5	30	38	23	63,5	18	9

Typ	Characteristic load F_k [kN]	Recommended load F_z [kN]	Item #
EQZS	1,2	0,6	10071

Rectangular duct brackets

EQLS**Description**

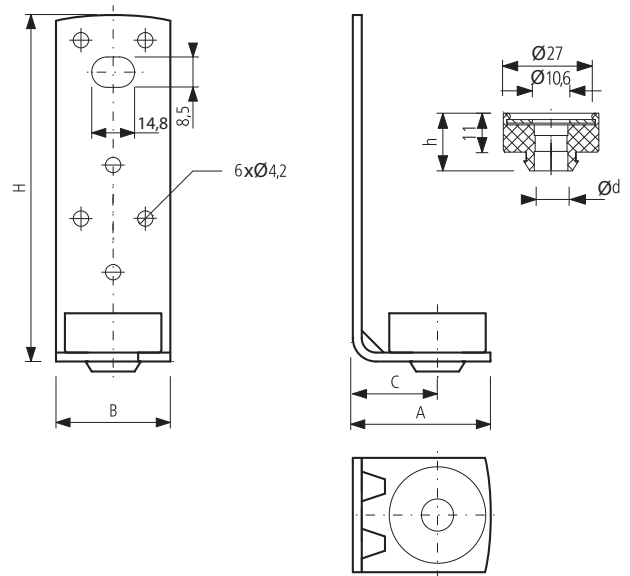
Suitable for quick installation of rectangular ventilation ducts, especially using threaded rods and self-tapping screws. Thickness: 2,3 mm.

Example identification

Product code:

EQLS

type _____

Dimensions

A [mm]	B [mm]	C [mm]	H [mm]	h [mm]	Ød [mm]
38	25	23	98	18,7	10

Typ	Characteristic load F_k [kN]	Recommended load F_2 [kN]	Item #
EQLS	1,2	0,6	10072

Rectangular duct brackets

EQVS-S



Description

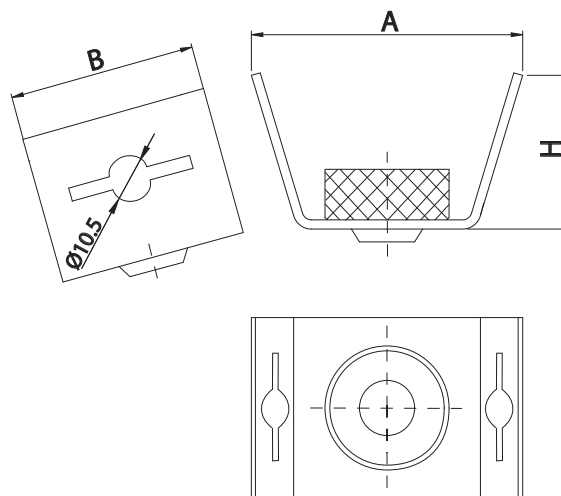
For safe and quick installation of any ductwork. With V-shaped brackets you can suspend any type of element to roof structures made of trapezoidal sheet, using self-tapping screws. EQVS-S brackets are made of sheet which is 1.9 mm thick.

Example identification

Product code: EQVS-S

type _____

Dimensions



code	A [mm]	B [mm]	H [mm]	Item #
EQVS-S	75	50	32	10073

Rectangular duct brackets

EQZS-S**Description**

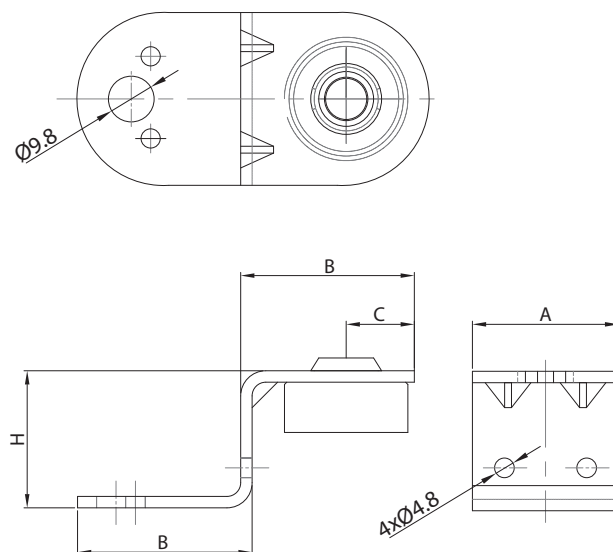
They are used for quick installation of rectangular ventilation ducts, especially with PG threaded rods and WGO self-tapping screws. EQZS-S elements are fixed to the bottom corner of a ventilation duct, creating a surface below the duct, which, together with screws on the duct's lateral part, secures the ductwork.

EQZS-S brackets are made of sheet which is 2.00 mm thick.

Example identification

Product code: EQZS-S

type _____

Dimensions

Typ	A [mm]	B [mm]	C [mm]	H [mm]	Item #
EQZS-S	50	39	20	30	10074

Rectangular duct brackets

EQLS-S



Description

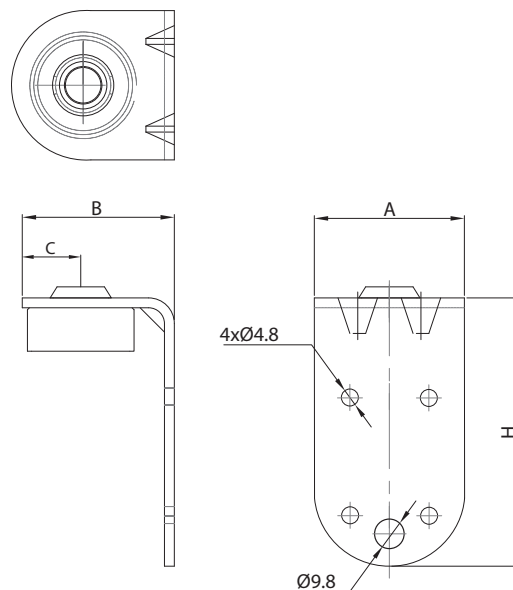
They are used for quick installation of rectangular ventilation ducts, especially with PG threaded rods and WGO self-tapping screws. Since the element is fixed to the upper part of a ventilation duct, it reduces the length of threaded rods used for ductwork hanging. EQLS-S brackets are made of sheet which is 2.00 mm thick.

Example identification

Product code: **EQLS-S**

type _____

Dimensions

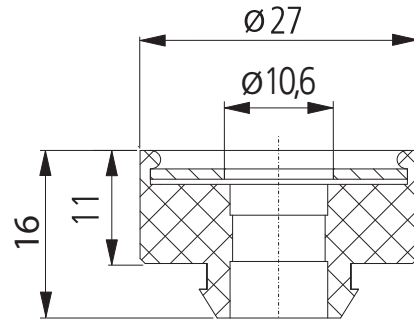


Typ	A [mm]	B [mm]	C [mm]	H [mm]	Item #
EQLS-S	50	40	20	64	10075

AMORT



Dimensions



Description Item# 10076

AMORT shock absorber is used for ventilaton duct suspension systems It is made of EPDM rubber with galvanized sheet metal washer. AMORT shock absorber is used to absorb vibration.

Example identification
Product code: **AMORT**

typ _____